

DB2-B727

パーツブック
PARTS BOOK
TEILEKATALOG
LIVRE DES PIECES
LIBRO DE REFERENCIA DE PIEZAS

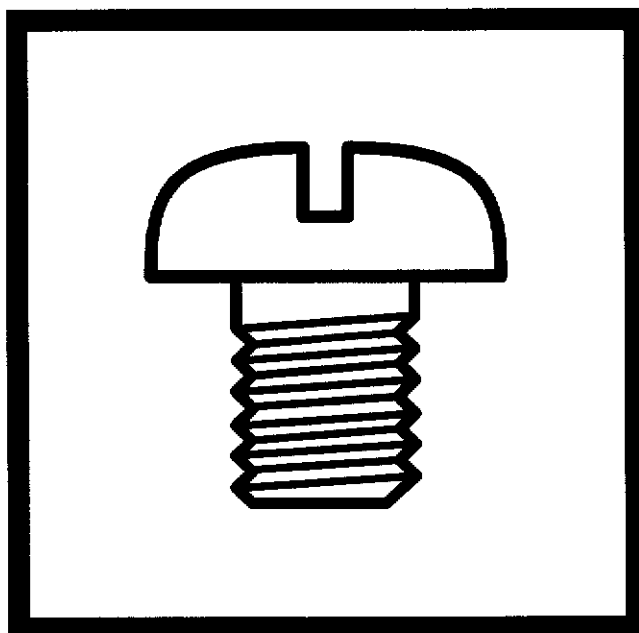
本縫上下送り大釜ミシン

SINGLE NEEDLE TOP AND BOTTOM FEED LOCK STITCHER WITH LARGE HOOK

EINNADEL-STEPSTICH-SCHNELLNÄHER MIT SCHNELLVERSTELLB. OBER- UND UNTERTRANSPORT U. GROSSEM GREIFER

PIQUEUSE 1 AIGUILLE - POINT NOUE ENTRAÎNEMENTS SUPÉRIEURS ET INFÉRIEURS AVEC CROCHET GRANDE CAPACITÉ

1 AGUJA DOBLE ARRASTRE POR PATA PRENSATELAS, GARFIO GRANDE



パーツブックご利用に際して

1. この本は、1999年11月のデータに基づいて作成されたものです。
2. 部品は予告なしに設計変更される場合があります。
3. 組単位で補給する部品は、 破線で示しております。

目 次

| | |
|--------------------|----|
| A. 主体関係 | 1 |
| B. 針棒・天秤関係 | 3 |
| C. 押工関係 | 5 |
| D. 送り関係 | 7 |
| E. 上送り関係 | 11 |
| F. カマ関係 | 15 |
| G. 給油潤滑関係 | 17 |
| H. 糸通シ関係 | 19 |
| Z. 付属品関係 | 21 |
| Ga. ゲージ部品一覧表 | 23 |
| Wa. 警告ラベル | 24 |
| 索引 | 25 |

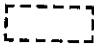
Notes for using this parts book

1. This book was prepared based on information available in November 1999.
2. Parts are subject to changes in design without prior notice.
3. Parts supplied as complete assemblies are circled by a dotted line [] .

CONTENTS

| | |
|--|----|
| A. Machine body | 1 |
| B. Needle bar and thread take-up mechanism | 3 |
| C. Presser foot mechanism | 5 |
| D. Feed mechanism | 7 |
| E. Upper feed mechanism | 11 |
| F. Rotary hook mechanism | 15 |
| G. Lubrication | 17 |
| H. Threading mechanism | 19 |
| Z. Accessories | 21 |
| Ga. Gauge parts List | 23 |
| Wa. Warning labels | 24 |
| INDEX | 25 |

Hinweise zur Verwendung dieser Teileliste

1. Dieses Buch basiert auf den Informationen vom November 1999.
2. Modelländerungen sind vorbehalten.
3. Die Teile, die als kompletter Satz geliefert werden, sind mit einer  gestrichelten Linie umrandet.

INHALTSVERZEICHNIS

| | |
|--|----|
| A. Maschinengehäuse | 1 |
| B. Nadelstange und Fadenabnahmevorrichtung | 3 |
| C. Stoffdrückerfuß | 5 |
| D. Transportvorrichtung | 7 |
| E. Obertransportvorrichtung | 11 |
| F. Greifervorrichtung | 15 |
| G. Schmierung | 17 |
| H. Fadenführungsvorrichtung | 19 |
| Z. Zubehör | 21 |
| Ga. Lehrenliste | 23 |
| Wa. Warnschilder | 24 |
| VERZEICHNIS | 25 |

Notes sur l'utilisation de ce manuel de pièces détachées

1. Ce manuel a été fait d'après les renseignements valables au mois de Novembre 1999.
2. Les pièces peuvent être sujettes à des modifications sans préavis.
3. Les pièces fournies en tant qu'assemblages complets sont encadrées avec un trait pointillé [].

TABLE DES MATIERES

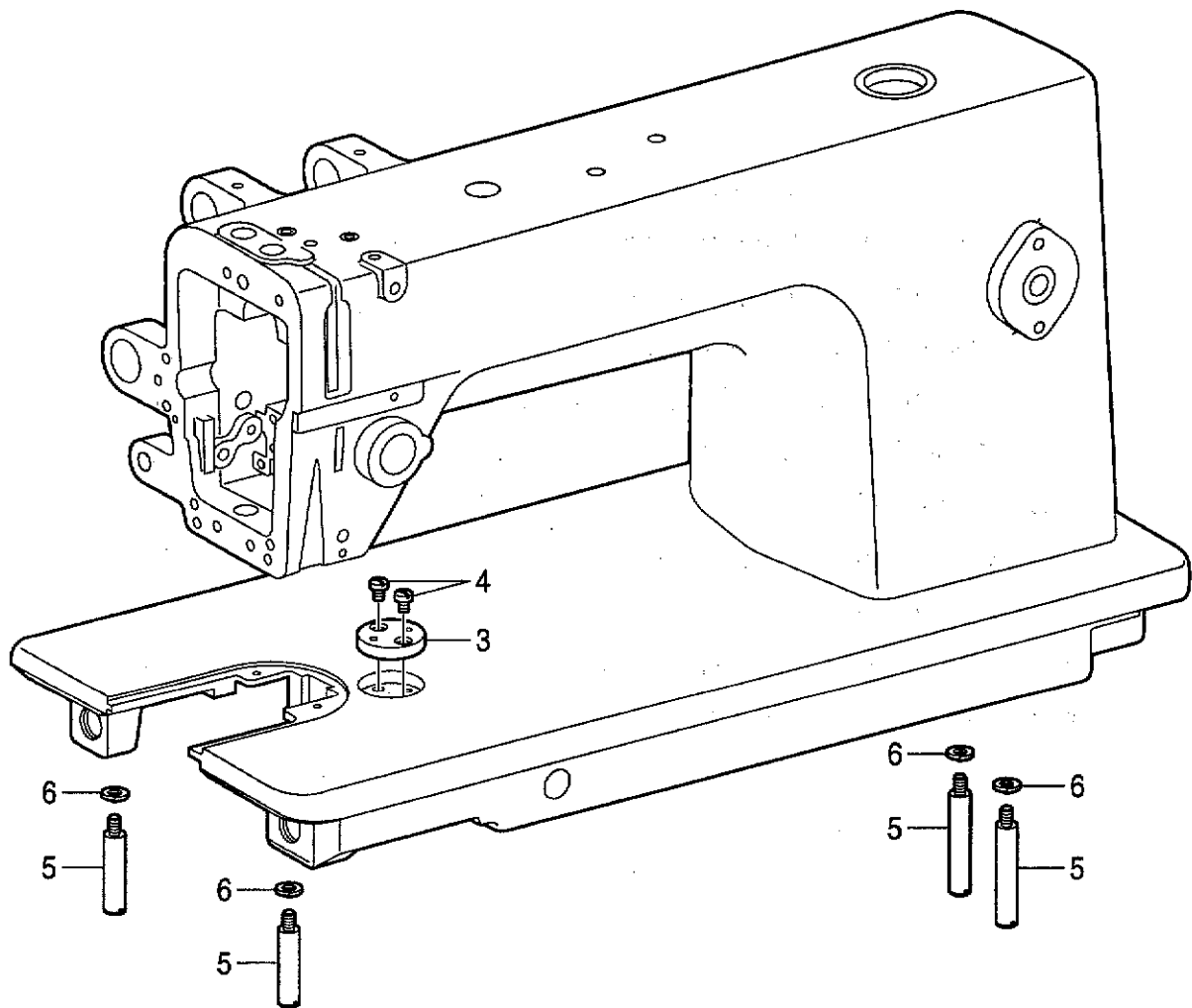
| | |
|--|----|
| A. Corps de la machine | 1 |
| B. Mécanisme de la barre à aiguille et releveur de fil ... | 3 |
| C. Mécanisme de pied presseur | 5 |
| D. Mécanisme de l'entraînement | 7 |
| E. Mécanisme de l'entraînement supérieur | 11 |
| F. Mécanisme du crochet rotatif | 15 |
| G. Lubrification | 17 |
| H. Mécanisme de l'enfilage | 19 |
| Z. Accessoires | 21 |
| Ga. Liste des Pièces decartment | 23 |
| Wa. Etiquettes d'avertissement | 24 |
| INDEX | 25 |

Notas para usar este Manual de Piezas

1. Este libro ha sido compilado basándose en los datos de que se disponía en noviembre 1999.
2. Las piezas quedan sujetas a cambios de diseño sin aviso previo.
3. Las piezas suministradas como conjuntos completos se enmarcan con una línea punteada [----].

INDICE

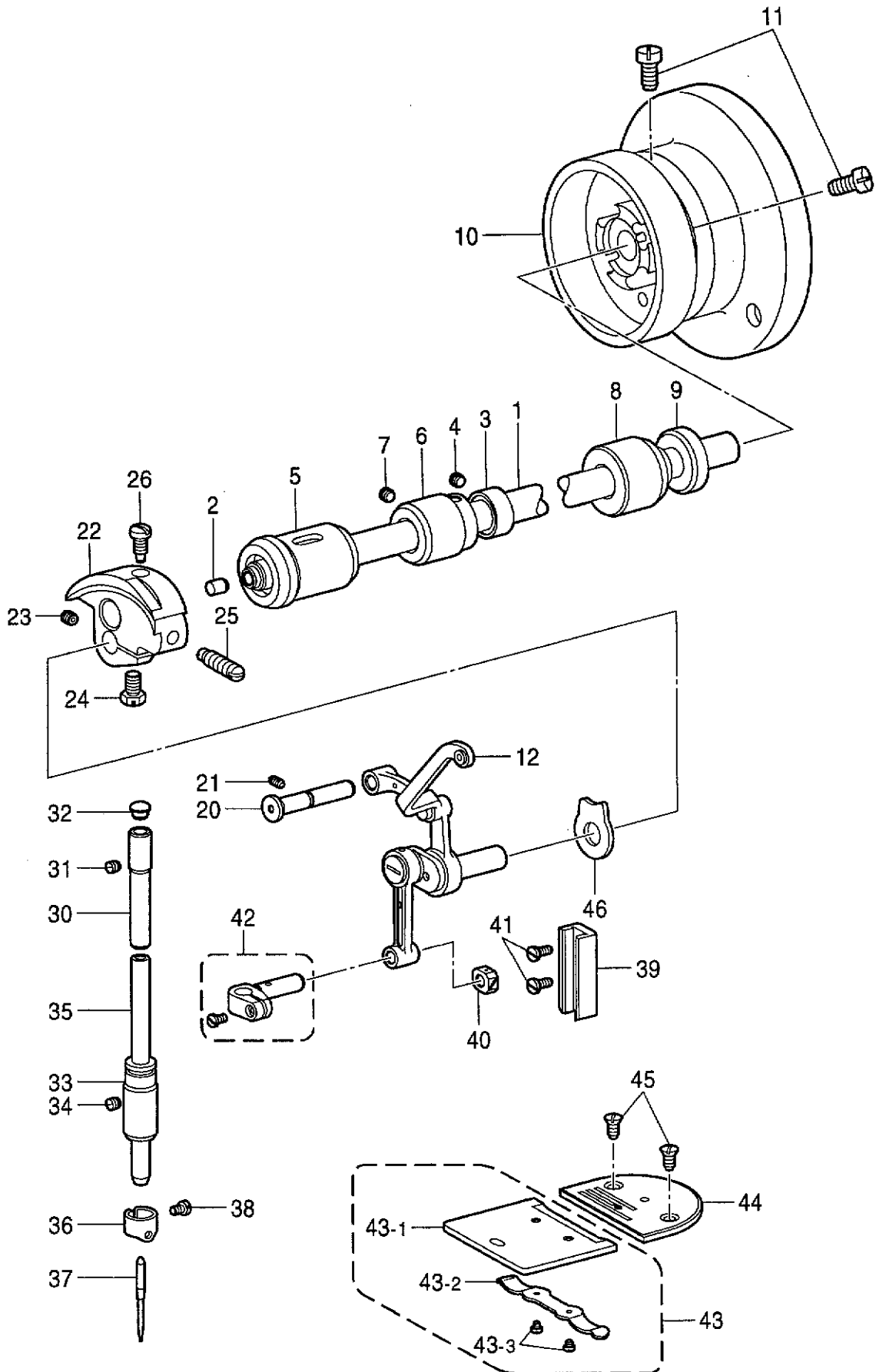
| | |
|---|----|
| A. Cuerpo de la máquina | 1 |
| B. Mecanismo de la barra de aguja y tirahilos | 3 |
| C. Mecanismo de la prensa tela | 5 |
| D. Mecanismo de la alimentación | 7 |
| E. Mecanismo de la alimentación superior | 11 |
| F. Mecanismo del cangrejo | 15 |
| G. Lubricación | 17 |
| H. Mecanismo del enhebrado | 19 |
| Z. Accesorios | 21 |
| Ga. Lista d'ePiezas de calibradores | 23 |
| Wa. Etiquetas de advertencia | 24 |
| INDICE | 25 |



A. 主体関係 / Machine body / Maschinengehäuse / Corps de la machine / Cuerpo de la máquina

| REF.NO. | CODE | Q'TY | ヒンメイ | NAME OF PARTS | RM |
|---------|-----------|------|------------|--------------------------|----|
| 3 | SW0003001 | 1 | ジヨウギイタ | RULER PLATE | |
| 4 | SW0004001 | 2 | ジヨウギイタトメネジ | SCREW, PAN SM4.37-40X5.5 | |
| 5 | SW0005001 | 4 | キャクチユウ | BED LEG | |
| 6 | SW0006001 | 4 | バネザガネ | WASHER, SPRING | |

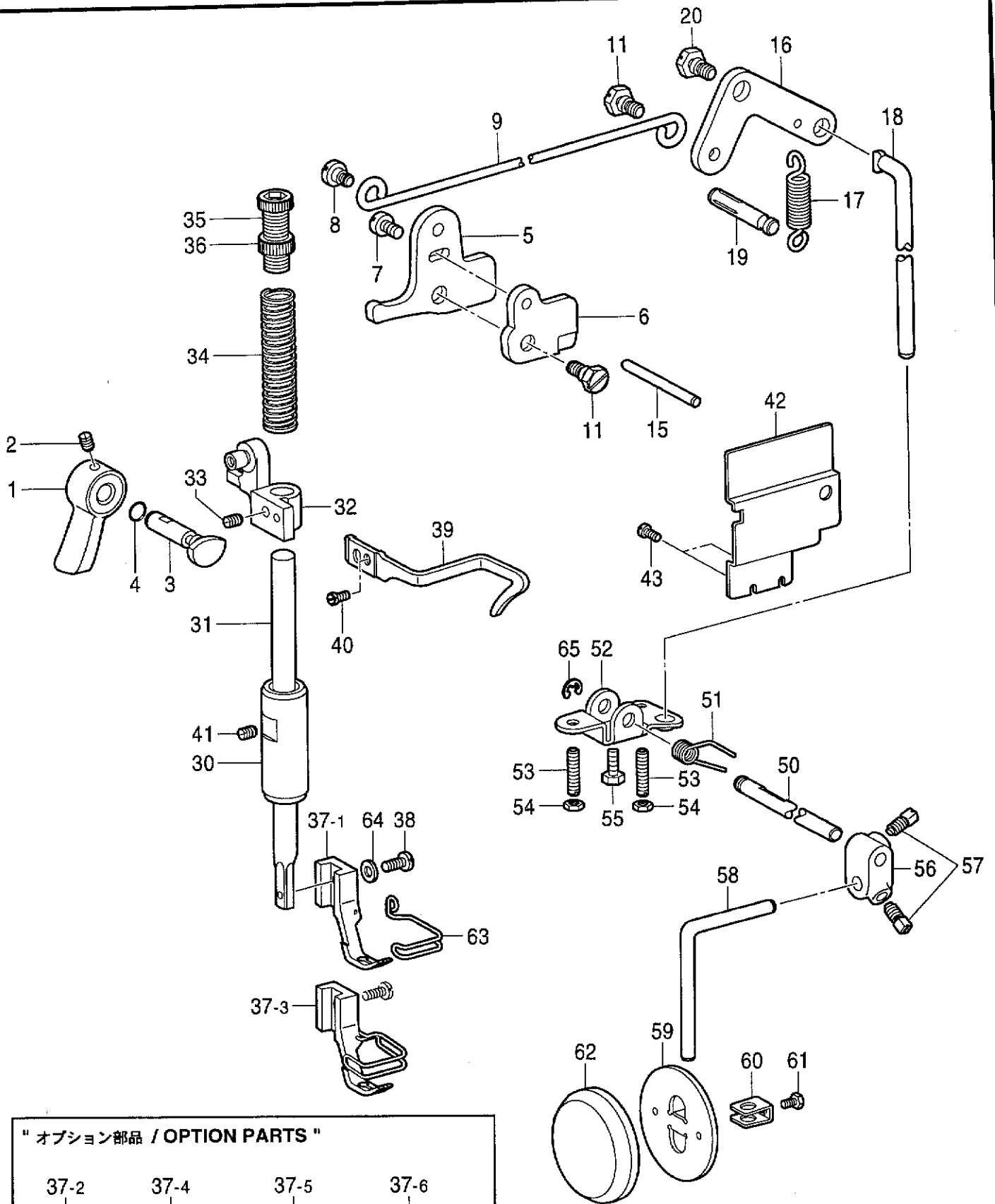
B. 針棒・天秤関係 / Needle bar and thread take-up mechanism / Nadelstange und Fadenabnahmevorrichtung
 / M canisme de la barre aiguille et releveur de fil / Mecanismo de la barra de aguja y tirah los



B. 針棒・天秤関係 / Needle bar and thread take-up mechanism / Nadelstange und Fadenabnahmevorrichtung / Mécanisme de la barre à aiguille et releveur de fil / Mecanismo de la barra de aguja y tirahilos

| REF.NO. | CODE | Q'TY | ヒンメイ | NAME OF PARTS | RM |
|---------|-----------|------|---------------|--------------------------|----|
| 1 | SW0010001 | 1 | ウワジク | UPPER SHAFT | |
| 2 | SW0011001 | 2 | ゴムセン | RUBBER CAP | |
| 3 | SW0012001 | 1 | セツトカラー | SET SCREW COLLAR | |
| 4 | SW0013001 | 2 | トメネジ635X40X4 | SET SCREW, SM6.35-40X4 | |
| 5 | SW0014001 | 1 | ウワジクメタルL | BUSH, L | |
| 6 | SW0015001 | 1 | ウワジクメタルM | BUSH, M | |
| 7 | SW0016001 | 1 | トメネジ595X28X10 | SET SCREW, SM5.95-28X10 | |
| 8 | SW0017001 | 1 | ウワジクメタルR | BUSH, R | |
| 9 | SW0018001 | 1 | オイルシール | OIL SEAL | |
| 10 | SW0019001 | 1 | プーリ | PULLEY | |
| 11 | SW0020001 | 2 | トメネジ595X28X27 | SET SCREW, SM5.95-28X27 | |
| 12 | SW0021001 | 1 | ハリボウレンカクミ | THREAD TAKE-UP LEVER SET | |
| 20 | SW0030001 | 1 | テンピンササエジク | SUPPORT SHAFT | |
| 21 | SW0016001 | 1 | トメネジ595X28X10 | SET SCREW, SM5.95-28X10 | |
| 22 | SW0032001 | 1 | テンピンクランク | THREAD TAKE-UP CRANK | |
| 23 | SW0033001 | 1 | トメネジ635X40X7 | SET SCREW, SM6.35-40X7 | |
| 24 | SW0034001 | 1 | ハリボウクランクトメネジ | SCREW, SM6.35-40X10.5 | |
| 25 | SW0035001 | 1 | テンピンクランクトメネジ | SCREW, SM7.14-28X18 | |
| 26 | SW0036001 | 1 | テンピンクランクトメネジ | SCREW, SM7.14-28X17 | |
| 30 | SW0040001 | 1 | ハリボウメタルU | BUSH, U | |
| 31 | SW0041001 | 1 | トメネジ595X28X5 | SET SCREW, SM5.95-28X5 | |
| 32 | SW0042001 | 1 | キャツブ | CAP | |
| 33 | SW0043001 | 1 | ハリボウメタルD | BUSH, D | |
| 34 | SW0044001 | 1 | トメネジ437X40X3 | SET SCREW, SM4.37-40X3 | |
| 35 | SW0045001 | 1 | ハリボウ | NEEDLE BAR | |
| 36 | SW0046001 | 1 | ハリボウイトアンナイ | THREAD GUIDE | |
| 37 | 145646023 | 1 | ミシンハリDPX17 | NEEDLE, DPX17 (#23) | |
| 38 | SW0048001 | 1 | ハリトメネジ | SET SCREW, SM3.18-44X4.5 | |
| 39 | SW0049001 | 1 | ハリボウアンナイ | GUIDE, N-BAR | |
| 40 | SW0050001 | 1 | ハリボウアンナイカクコマ | SLIDE BLOCK | |
| 41 | SW0051001 | 2 | ハリボウアンナイシメネジ | SCREW, SM4.37-40X8 | |
| 42 | SW0052001 | 1 | ハリボウダキ | NEEDLE BAR CLAMP | |
| 43 | SW0053001 | 1 | スベリイタクミ | SLIDE PLATE ASSY | |
| 43-1 | SW0054001 | 1 | スベリイタ | SLIDE PLATE | |
| 43-2 | SW0055001 | 1 | スベリイタバネ | SPRING, PLATE | |
| 43-3 | SW0056001 | 2 | スベリイタバネシメネジ | SCREW, SM2.38-56X2.5 | |
| 44 | SW0057001 | 1 | ハリイタ | NEEDLE PLATE | |
| 45 | SW0058001 | 2 | ハリイタサラネジ | SCREW, SM4.37-40X8 | |
| 46 | SW0489001 | 1 | ザガネ | WASHER, PLAIN | |

C. 押工関係 / Presser foot mechanism / Stoffdrückerfuß / Mécanisme de pied presseur / Mecanismo de la prensa tela



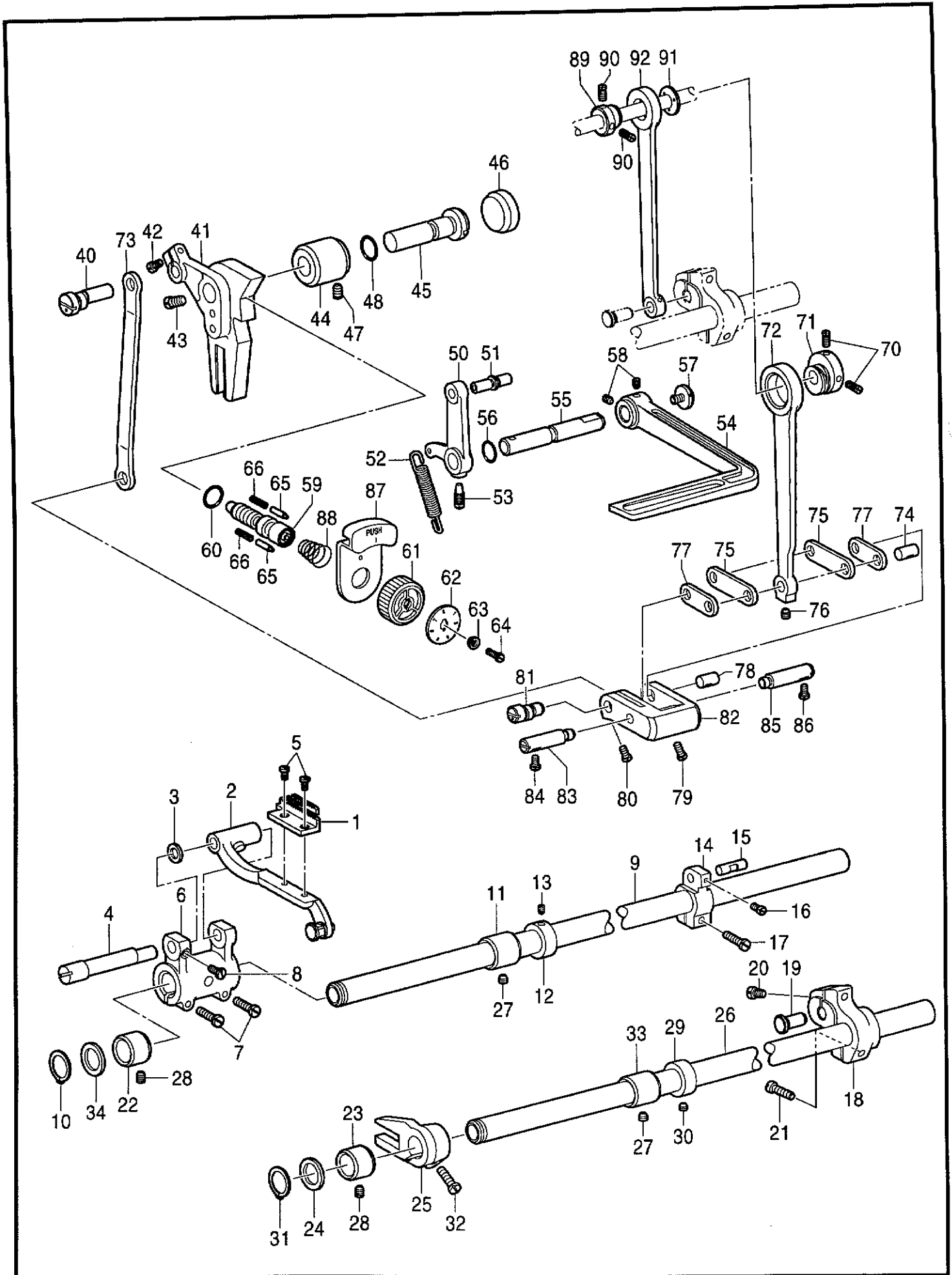
" オプション部品 / OPTION PARTS "

| | | | |
|------|------|------|------|
| 37-2 | 37-4 | 37-5 | 37-6 |
| | | | |

C. 押工関係 / Presser foot mechanism / Stoffdrückerfuß / Mécanisme de pied presseur / Mecanismo de la prensa tela

| REF.NO. | CODE | Q'TY | ヒンメイ | NAME OF PARTS | RM |
|---------|-----------|------|--------------------|--------------------------------|----|
| 1 | SW0060001 | 1 | オサエアゲテコ | PRESSER BAR LIFTER | |
| 2 | SW0061001 | 1 | オサエアゲテコトメネジ | SET SCREW, SM4.37-40X6.6 | |
| 3 | SW0062001 | 1 | オサエアゲクランク | LIFTER CRANK, P-BAR | |
| 4 | SW0063001 | 1 | Oリング | O RING | |
| 5 | SW0064001 | 1 | オサエアゲレバー | LIFTER LEVER, P-BAR | |
| 6 | SW0065001 | 1 | アンナイイタ | GUIDE PLATE | |
| 7 | SW0066001 | 1 | オサエアゲレバーシメネジ | SCREW, SM4.37-40X6.5 | |
| 8 | SW0067001 | 1 | アゲレバーダンネジ | SHOULDER SCREW, SM4.37 | |
| 9 | SW0068001 | 1 | ヒザアゲレンカン | CONNECTING ROD, K-LIFTER | |
| 11 | SW0069001 | 2 | レンカندانネジ | SHOULDER SCREW, SM5.95 | |
| 15 | SW0070001 | 1 | イトエルメジク | SHAFT | |
| 16 | SW0071001 | 1 | ヒザアゲレバー | LEVER, K-LIFTER | |
| 17 | SW0072001 | 1 | ヒザアゲレバーバネ | SPRING, EXTENSION | |
| 18 | SW0073001 | 1 | ヒザアゲボウ | KNEE LIFTER BAR | |
| 19 | SW0074001 | 1 | バネカケ | SPRING HOOK | |
| 20 | SW0075001 | 1 | ヒザアゲレバダンネジ | SHOULDER SCREW, SM5.95 | |
| 30 | SW0076001 | 1 | オサエボウメタル | BUSH, P-BAR | |
| 31 | SW0077001 | 1 | オサエボウ | PRESSER BAR | |
| 32 | SW0078001 | 1 | オサエボウダキ | GUIDE BRACKET, P-BAR | |
| 33 | SW0079001 | 1 | トメネジ595X28X8 | SET SCREW, SM5.95-28X8 | |
| 34 | SW0080001 | 1 | オサエバネ | SPRING, COMPRESSION | |
| 35 | SW0081001 | 1 | オサエチヨウセツネジ | ADJUSTING SCREW, PRESSER | |
| 36 | SW0082001 | 1 | チヨウセツネジツマミナツト | ADJUSTING NUT, PRESSER | |
| 37-1 | SW0083001 | 1 | オサエアシ | PRESSER FOOT | |
| 37-3 | SW0105001 | 1 | オサエアシクミ | PRESSER FOOT ASSY, W/F-GUARD | |
| 37-2 | S04502101 | 1 | <オプション部品> オサエアシ | <OPTION PARTS> PRESSER FOOT | |
| 37-4 | S36917001 | 1 | オサエアシクミ | PRESSER FOOT ASSY, R-W/FG | |
| 37-5 | 151850001 | 1 | ナカオサエ | INNER PRESSER FOOT | |
| 37-6 | 151852001 | 1 | コモノヌイヨウオサエナカ | PRESSER FOOT | |
| 38 | SW0084001 | 1 | オサエアシトリツケネジ | SCREW, SM3.57-40X11 | |
| 39 | SW0085001 | 1 | オサエボウダキイトカケ | THREAD HOOK | |
| 40 | SW0086001 | 1 | シメネジ437X40X6 | SCREW, SM4.37-40X6 | |
| 41 | SW0044001 | 1 | トメネジ437X40X3 | SET SCREW, SM4.37-40X3 | |
| 42 | SW0088001 | 1 | オイルシヤヘイカバー | OIL GUARD | |
| 43 | SW0086001 | 2 | シメネジ437X40X6 | SCREW, SM4.37-40X6 | |
| 50 | SW0090001 | 1 | ヒザアゲヨコジク | LIFTER SHAFT | |
| 51 | SW0091001 | 1 | ヒザアゲバネ | SPRING | |
| 52 | SW0092001 | 1 | ヒザアゲブラケット | BRACKET | |
| 53 | SW0093001 | 2 | ヒザアゲチヨウセツネジ | ADJUSTING SCREW | |
| 54 | SW0094001 | 2 | ヒザアゲチヨウセツナツト | ADJUSTING NUT | |
| 55 | SW0020001 | 1 | トメネジ595X28X27 | SET SCREW, SM5.95-28X27 | |
| 56 | SW0096001 | 1 | ヒザアテツギテ | BRACKET | |
| 57 | SW0097001 | 2 | ヒザアテツギテカクボルト | BOLT, SQUARE SM7.94-18X13 | |
| 58 | SW0098001 | 1 | ヒザアゲタテジク | LIFTER BAR | |
| 59 | S34756001 | 1 | ヒザアテ | KNEE LIFTER PLATE | |
| 60 | SW0100001 | 1 | ヒザアテストツハー | STOPPER | |
| 61 | SW0101001 | 1 | ヒザアテストツハーネジ | SCREW, SM5.95-28X8 | |
| 62 | S31885001 | 1 | ヒザアテカバー | COVER, KNEE LIFTER PLATE | |
| 63 | SW0103001 | 1 | フィンガーガード | FINGER GUARD | |
| 64 | SW0104001 | 1 | ザガネ | WASHER, PLAIN | |
| 65 | SW0396001 | 1 | トメワ | RETAINING RING, E | |

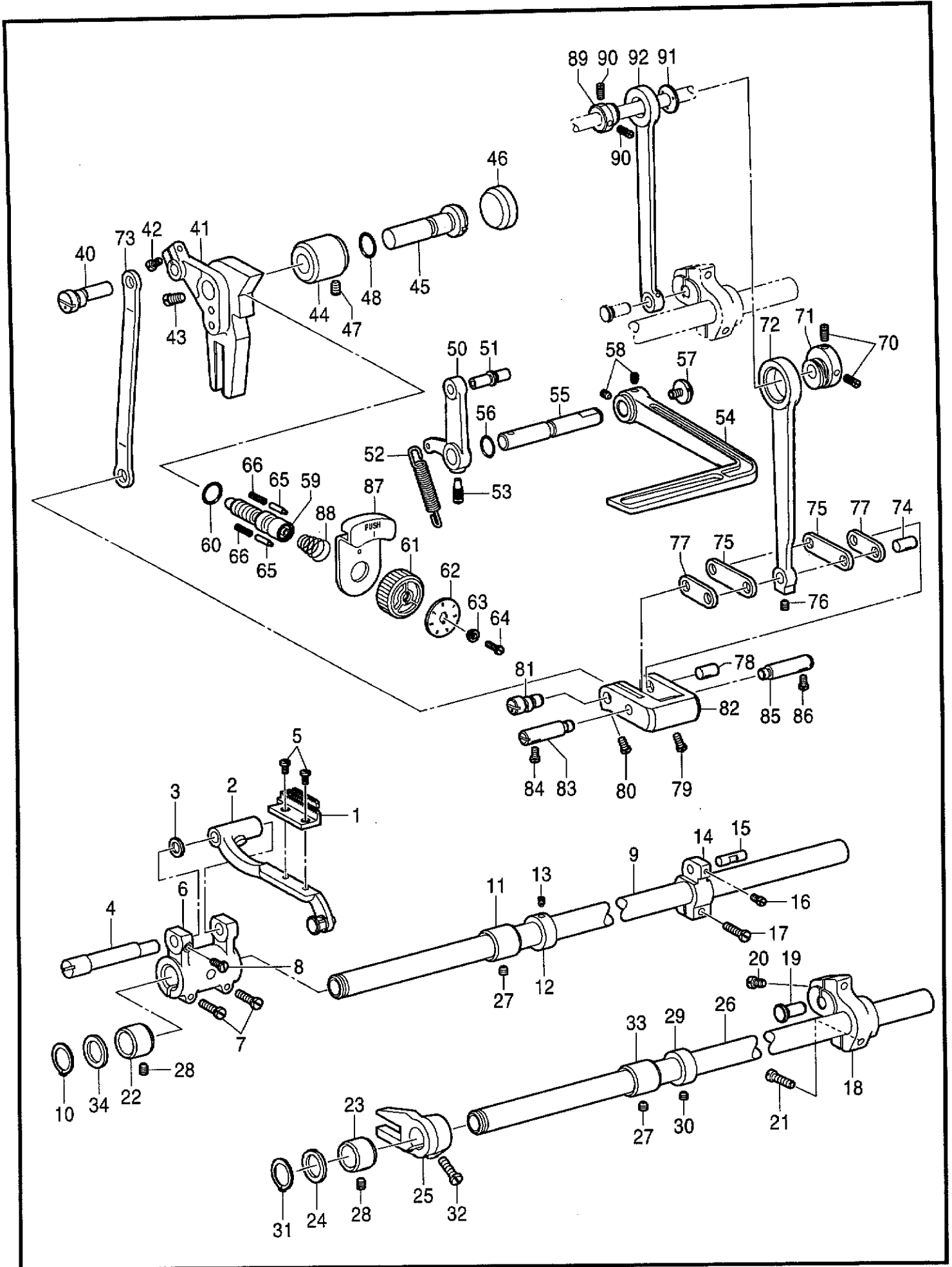
D. 送り関係 / Feed mechanism / Transportvorrichtung / Mécanisme de l'entraînement / Mecanismo de la alimentación



D. 送り関係 / Feed mechanism / Transportvorrichtung / Mécanisme de l'entraînement / Mecanismo de la alimentación

| REF.NO. | CODE | Q'TY | ヒンメイ | NAME OF PARTS | R/M |
|---------|-----------|------|----------------|-----------------------------|-----|
| 1 | SW0120001 | 1 | オクリバ | FEED DOG | |
| 2 | SW0121001 | 1 | オクリダイ | FEED BAR | |
| 3 | SW0122001 | 1 | オクリダイワツシヤー | WASHER, PLAIN | |
| 4 | SW0123001 | 1 | オクリダイジク | SHAFT | |
| 5 | SW0124001 | 2 | オクリバシメネジ | SCREW, SM3.18-44X6 | |
| 6 | SW0125001 | 1 | スイヘイオクリダイウデ | FEED ROCKER ARM | |
| 7 | SW0126001 | 2 | シメネジ476X28X15 | SCREW, SM4.76-28X15 | |
| 8 | SW0127001 | 1 | オクリダイジクトメネジ | SCREW, SM4.37-40X8 | |
| 9 | SW0128001 | 1 | スイヘイオクリジク | STUD | |
| 10 | SW0129001 | 1 | Cガタトメワ | RETAINING RING, C | |
| 11 | SW0130001 | 1 | スイヘイオクリジクメタルM | BUSH, M | |
| 12 | SW0131001 | 1 | オクリジクセツトカラー | SET SCREW COLLAR | |
| 13 | SW0013001 | 2 | トメネジ635X40X4 | SET SCREW, SM6.35-40X4 | |
| 14 | SW0133001 | 1 | スイヘイオクリウデ | FEED ROCKER ARM | |
| 15 | SW0134001 | 1 | スイヘイオクリウデジク | STUD | |
| 16 | SW0135001 | 1 | トメネジ437X40X5 | SET SCREW, SM4.37-40X5 | |
| 17 | SW0136001 | 1 | シメネジ437X40X12 | SCREW, SM4.37-40X12 | |
| 18 | SW0137001 | 1 | UDオクリジクウデ | FEED LIFTING ARM, UD | |
| 19 | SW0138001 | 1 | UDオクリジクウデピン | PIN | |
| 20 | SW0126001 | 1 | シメネジ476X28X15 | SCREW, SM4.76-28X15 | |
| 21 | SW0140001 | 1 | オクリジクウデシメネジ | SCREW, SM4.76 | |
| 22 | SW0141001 | 1 | オクリジクメタルL | BUSH, L | |
| 23 | SW0141001 | 1 | オクリジクメタルL | BUSH, L | |
| 24 | SW0142001 | 1 | ジヨウゲジクワツシヤー | WASHER, PLAIN | |
| 25 | SW0143001 | 1 | ジヨウゲオクリウデ | FEED LIFTING ARM | |
| 26 | SW0144001 | 1 | ジヨウゲオクリジク | SHAFT | |
| 27 | SW0041001 | 2 | トメネジ595X28X5 | SET SCREW, SM5.95-28X5 | |
| 28 | SW0016001 | 2 | トメネジ595X28X10 | SET SCREW, SM5.95-28X10 | |
| 29 | SW0131001 | 1 | オクリジクセツトカラー | SET SCREW COLLAR | |
| 30 | SW0013001 | 2 | トメネジ635X40X4 | SET SCREW, SM6.35-40X4 | |
| 31 | SW0129001 | 1 | Cガタトメワ | RETAINING RING, C | |
| 32 | SW0150001 | 1 | UDオクリウデシメネジ | SCREW, SM4.37 | |
| 33 | SW0130001 | 1 | スイヘイオクリジクメタルM | BUSH, M | |
| 34 | SW0142001 | 1 | ジヨウゲジクワツシヤー | WASHER, PLAIN | |
| 40 | SW0160001 | 1 | キリカエキレンカンジク | CONNECTING STUD | |
| 41 | SW0161001 | 1 | オクリチヨウセツキ | FEED REGULATOR | |
| 42 | SW0136001 | 1 | シメネジ437X40X12 | SCREW, SM4.37-40X12 | |
| 43 | SW0163001 | 1 | チヨウセツキジクトメネジ | SCREW, SM5.95-28X8.5 | |
| 44 | SW0164001 | 1 | オクリチヨウセツキジクメタル | BUSH | |
| 45 | SW0165001 | 1 | オクリチヨウセツキジク | STUD | |
| 46 | SW0166001 | 1 | ゴムセン | RUBBER CAP | |
| 47 | SW0016001 | 1 | トメネジ595X28X10 | SET SCREW, SM5.95-28X10 | |
| 48 | SW0176001 | 1 | レバージクOリング | O RING | |
| 50 | SW0170001 | 1 | レバー | LEVER | |
| 51 | SW0171001 | 1 | レバーピン | PIN | |
| 52 | SW0172001 | 1 | ヒキバネ | SPRING, EXTENSION | |
| 53 | SW0173001 | 1 | レパートメネジ | SCREW, SM5.59-28X14.5 | |
| 54 | SW0174001 | 1 | カエシヌイレバー | REVERSE STITCHING LEVER | |
| 55 | SW0175001 | 1 | カエシヌイレバージク | SHAFT, R-LEVER | |
| 56 | SW0176001 | 1 | レバージクOリング | O RING | |
| 57 | SW0177001 | 1 | カエシヌイレバーフタネジ | CAP SCREW, SM4.76-28X7 | |
| 58 | SW0178001 | 2 | カエシヌイレパートメネジ | SET SCREW, SM5.95-28X6.5 | |
| 59 | SW0179001 | 1 | オクリチヨウセツネジ | ADJUSTING SCREW | |
| 60 | SW0180001 | 1 | チヨウセツネジOリング | O RING | |
| 61 | SW0181001 | 1 | オクリメモリイタイ | STITCH LENGTH CONTROL DIAL | |
| 62 | SW0182001 | 1 | オクリメモリイタ | STITCH LENGTH CONTROL PLATE | |
| 63 | SW0183001 | 1 | メモリイタオサエ | SUPPORT PLATE | |
| 64 | SW0184001 | 1 | メモリイタオサエシメネジ | SCREW, SM4.76-28X12 | |

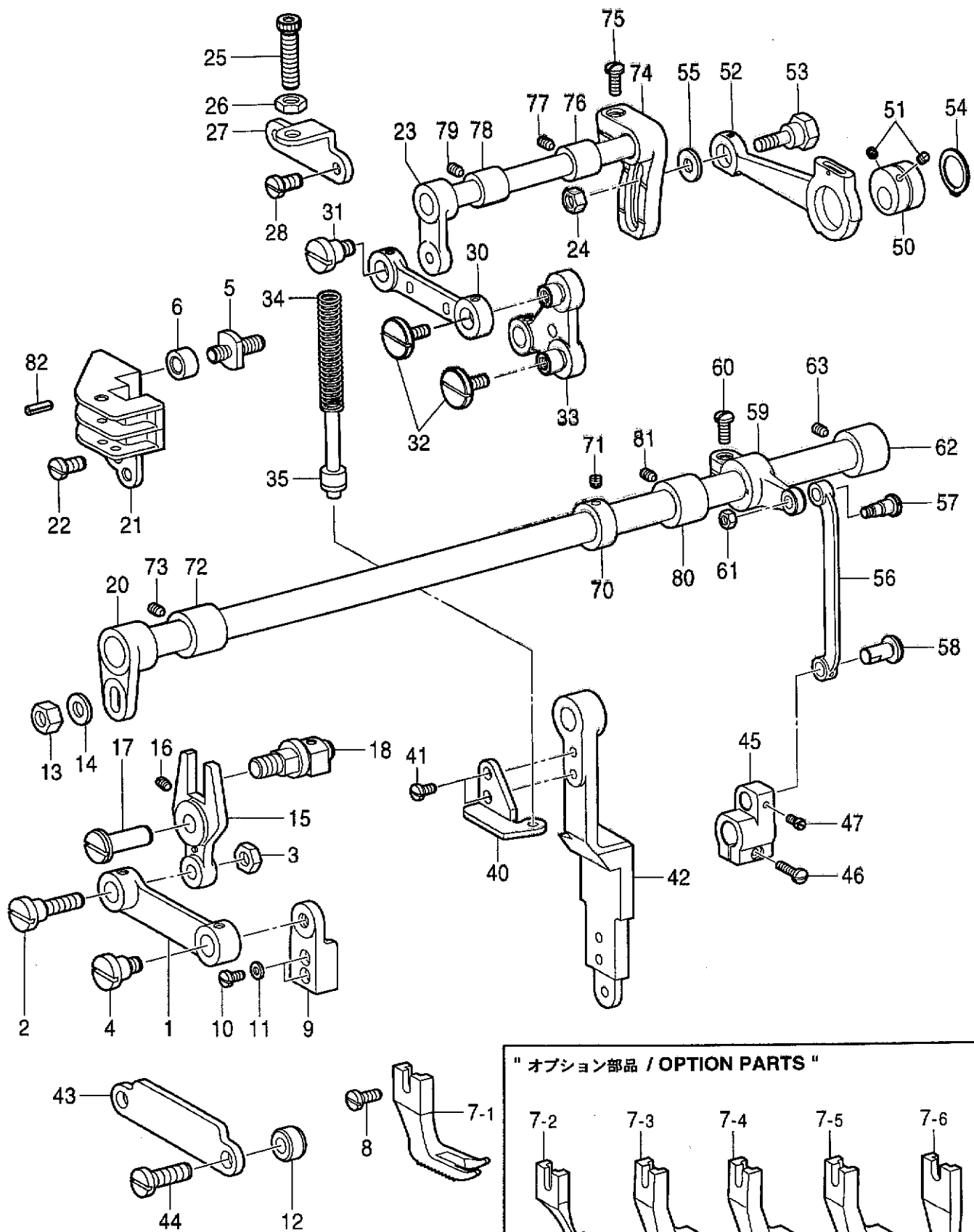
D. 送り関係 / Feed mechanism / Transportvorrichtung / Mécanisme de l'entraînement / Mecanismo de la alimentación



D. 送り関係 / Feed mechanism / Transportvorrichtung / Mécanisme de l'entraînement
/ Mecanismo de la alimentación

| REF.NO. | CODE | Q'TY | ヒンメイ | NAME OF PARTS | RM |
|---------|-----------|------|----------------|----------------------------|----|
| 65 | SW0185001 | 2 | メモリイチキメピン | POSITIONING PIN | |
| 66 | SW0186001 | 2 | メモリイチキメピンバネ | SPRING, COMPRESSION | |
| 70 | SW0190001 | 2 | スイハイヘンシンリントメネジ | SET SCREW, SM4.37-40X11 | |
| 71 | SW0191001 | 1 | スイハイヘンシンリン | LEVEL FEED ECCENTRIC WHEEL | |
| 72 | SW0192001 | 1 | スイハイオクリレンカン | LEVEL FEED CONNCTING ROD | |
| 73 | SW0193001 | 1 | キリカエキレンカン | CONNECTING ROD | |
| 74 | SW0194001 | 1 | リンクジク | STUD | |
| 75 | SW0195001 | 2 | スイハイオクリウデリンク | LINK | |
| 76 | SW0135001 | 1 | トメネジ437X40X5 | SET SCREW, SM4.37-40X5 | |
| 77 | SW0197001 | 2 | スイハイオクリリンク | FEED LINK | |
| 78 | SW0198001 | 1 | オクリリンクジクR | SHAFT, R | |
| 79 | SW0199001 | 1 | キリカエキトメネジ | SCREW, SM3.57-40X8.5 | |
| 80 | SW0200001 | 1 | オクリリンクジクLトメネジ | SCREW, SM3.57-40X6.5 | |
| 81 | SW0201001 | 1 | オクリリンクジクL | SHAFT, R | |
| 82 | SW0202001 | 1 | キリカエキ | FEED REGULATOR | |
| 83 | SW0203001 | 1 | キリカエキジクL | SHAFT, L | |
| 84 | SW0136001 | 1 | シメネジ437X40X12 | SCREW, SM4.37-40X12 | |
| 85 | SW0205001 | 1 | キリカエキジクR | SHAFT, R | |
| 86 | SW0206001 | 1 | キリカエキジクRトメネジ | SCREW, SM4.37 | |
| 87 | SW0207001 | 1 | マワリドメ | STOPPER | |
| 88 | SW0208001 | 1 | マワリドメバネ | SPRING | |
| 89 | SW0290001 | 1 | UDヘンシンリン | ECCENTRIC WHEEL, UD | |
| 90 | SW0291001 | 2 | UDヘンシンリントメネジ | SET SCREW, SM4.37-40X11 | |
| 91 | SW0292001 | 1 | レンカンオサエ | HOLDER | |
| 92 | SW0293001 | 1 | UDオクリレンカン | FEED CONECTTING ROD, UD | |

E. 上送り関係 / Upper feed mechanism / Obertransportvorrichtung
 / M canisme de l'«entrainement sup rieur / Mecanismo de la alimentraci n superior



" オプション部品 / OPTION PARTS "

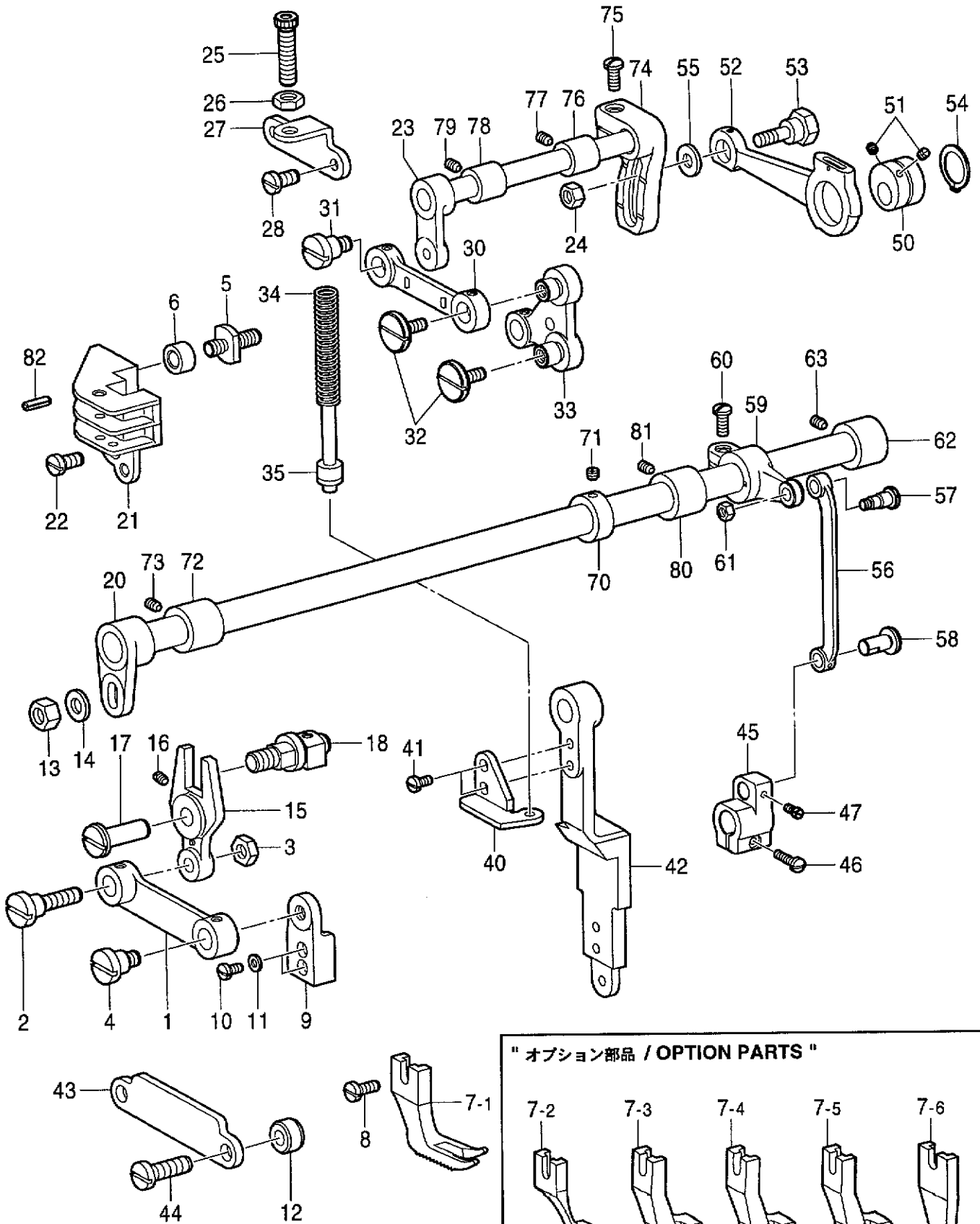
7-2 7-3 7-4 7-5 7-6

This section shows five alternative designs for part 7, labeled 7-2 through 7-6. Each design is a different shape of a bracket or lever component, intended to be used as an optional part in the assembly.

E. 上送り関係 / Upper feed mechanism / Obertransportvorrichtung
 / Mécanisme de l'entraînement supérieur / Mecanismo de la alimentación superior

| REF.NO. | CODE | Q'TY | ヒンメイ | NAME OF PARTS | RM |
|---------|-----------|------|----------------|------------------------------|----|
| 1 | SW0210001 | 1 | リンクS | LINK, S | |
| 2 | SW0211001 | 1 | リンクSダンネジL | SHOULDER SCREW, L | |
| 3 | SW0212001 | 1 | リンクSダンネジLナット | NUT, SM6.35 | |
| 4 | SW0213001 | 1 | リンクダンネジ | SHOULDER SCREW, SM6.35 | |
| 5 | SW0214001 | 1 | コロジク | ROLLER SHAFT | |
| 6 | SW0215001 | 1 | U-UDオクリレバーコロ | ROLLER | |
| 7-1 | SW0216001 | 1 | オクリアシ | WALKING FOOT | |
| ----- | | | | | |
| | | | <オプション部品> | <OPTION PARTS> | |
| 7-2 | S04501001 | 1 | オクリアシR | WALKING FOOT, R | |
| 7-3 | 151847001 | 1 | バツクカッタオサエ KC | WALKING FOOT, KC-1/4 | |
| 7-4 | 151848001 | 1 | バツクカッタオサエ MC | WALKING FOOT, MC-5/16 | |
| 7-5 | 151849001 | 1 | バツクカッタオサエ NC | WALKING FOOT, NC-3/8 | |
| 7-6 | 151851001 | 1 | コモノヌイヨウオサエソト | WALKING FOOT | |
| ----- | | | | | |
| 8 | SW0217001 | 1 | オクリアシトリツケネジ | SCREW, SM3.57-40X8 | |
| 9 | SW0218001 | 1 | オクリアシレンカンダキ | CLAMPER | |
| 10 | SW0219001 | 2 | シメネジ | SCREW, SM3.57-40X7 | |
| 11 | SW0220001 | 2 | レンカンダキザガネ | WASHER, PLAIN | |
| 12 | SW0221001 | 2 | カラー | COLLAR | |
| 13 | SW0222001 | 1 | 1シユナツト | NUT, 1 SM6.35 | |
| 14 | SW0223001 | 1 | ワツシヤ- | WASHER, PLAIN | |
| 15 | SW0224001 | 1 | Uスイハイオクリレバー | LEVER | |
| 16 | SW0225001 | 1 | オクリレバートメネジ | SET SCREW, SM4.76-32X7 | |
| 17 | SW0226001 | 1 | レバ-ジク | SHAFT | |
| 18 | SW0227001 | 1 | コロジククミ | ROLLER SHAFT ASSY | |
| 20 | SW0230001 | 1 | Uスイハイオクリジククミ | UPPER FEED ROCKER SHAFT ASSY | |
| 21 | SW0231001 | 1 | U-UDオクリレバーアンナイ | LEVER GUIDE | |
| 22 | SW0232001 | 2 | シメネジ | SCREW, SM4.37-40X8 | |
| 23 | SW0233001 | 1 | オクリウデLジククミ | FEEDING ARM SHAFT ASSY, L | |
| 24 | SW0234001 | 1 | 1シユナツト | NUT, 1 M6 | |
| 25 | SW0235001 | 1 | バネチヨウセツネジ | ADJUSTING SCREW | |
| 26 | SW0236001 | 1 | ナツト | NUT, SM7.14 | |
| 27 | SW0237001 | 1 | オクリアシオサエバネダイ | BRACKET | |
| 28 | SW0232001 | 2 | シメネジ | SCREW, SM4.37-40X8 | |
| 30 | SW0240001 | 1 | リンクL | LINK, L | |
| 31 | SW0213001 | 1 | リンクダンネジ | SHOULDER SCREW, SM6.35 | |
| 32 | SW0242001 | 2 | オクリレバ-ダンネジ | SHOULDER SCREW, SM4.76 | |
| 33 | SW0243001 | 1 | U-UDオクリレバ- | FEED LEVER | |
| 34 | SW0244001 | 1 | オクリアシオサエバネ | SPRING, COMPRESSION | |
| 35 | SW0245001 | 1 | オサエバネオシボウ | PUSHER BAR | |
| 40 | SW0250001 | 1 | オサエバネウケイタ | HOLDER PLATE | |
| 41 | SW0219001 | 2 | シメネジ | SCREW, SM3.57-40X7 | |
| 42 | SW0251001 | 1 | オクリアシレンカン | CONNECTING ROD | |
| 43 | SW0252001 | 1 | オクリアシレンカンアンナイ | ROD GUIDE | |
| 44 | SW0136001 | 2 | シメネジ437X40X12 | SCREW, SM4.37-40X12 | |
| 45 | SW0254001 | 1 | スイハイオクリウデUDヨウ | FEED ROCKER ARM, UD | |
| 46 | SW0126001 | 1 | シメネジ476X28X15 | SCREW, SM4.76-28X15 | |
| 47 | SW0135001 | 1 | トメネジ437X40X5 | SET SCREW, SM4.37-40X5 | |
| 50 | SW0260001 | 1 | U-UDオクリヘンシンリン | ECCENTRIC WHEEL, U-UD | |
| 51 | SW0261001 | 2 | オクリヘンシンリントメネジ | SET SCREW, SM6.35-40X6 | |
| 52 | SW0262001 | 1 | U-UDオクリレンカン | CONNECTING ROD, U-UD | |
| 53 | SW0263001 | 1 | オクリレンカンダンネジ | SHOULDER SCREW, M6 | |
| 54 | SW0264001 | 1 | Cガタトメワ | RETAINING RING, C | |
| 55 | SW0265001 | 1 | オクリレンカンザガネ | WASHER, PLAIN | |
| 56 | SW0266001 | 1 | UスイハイオクリレンカンL | CONNECTING ROD, LL | |
| 57 | SW0267001 | 1 | オクリレンカンLダンネジ | SHOULDER SCREW, SM7.14 | |
| 58 | SW0268001 | 1 | スイハイオクリレンカンジク | STUD | |
| 59 | SW0269001 | 1 | UスイハイオクリウデR | ARM, R | |

E. 上送り関係 / Upper feed mechanism / Obertransportvorrichtung
 / M canisme de l'entrainement sup rieur / Mecanismo de la alimentraci n superior



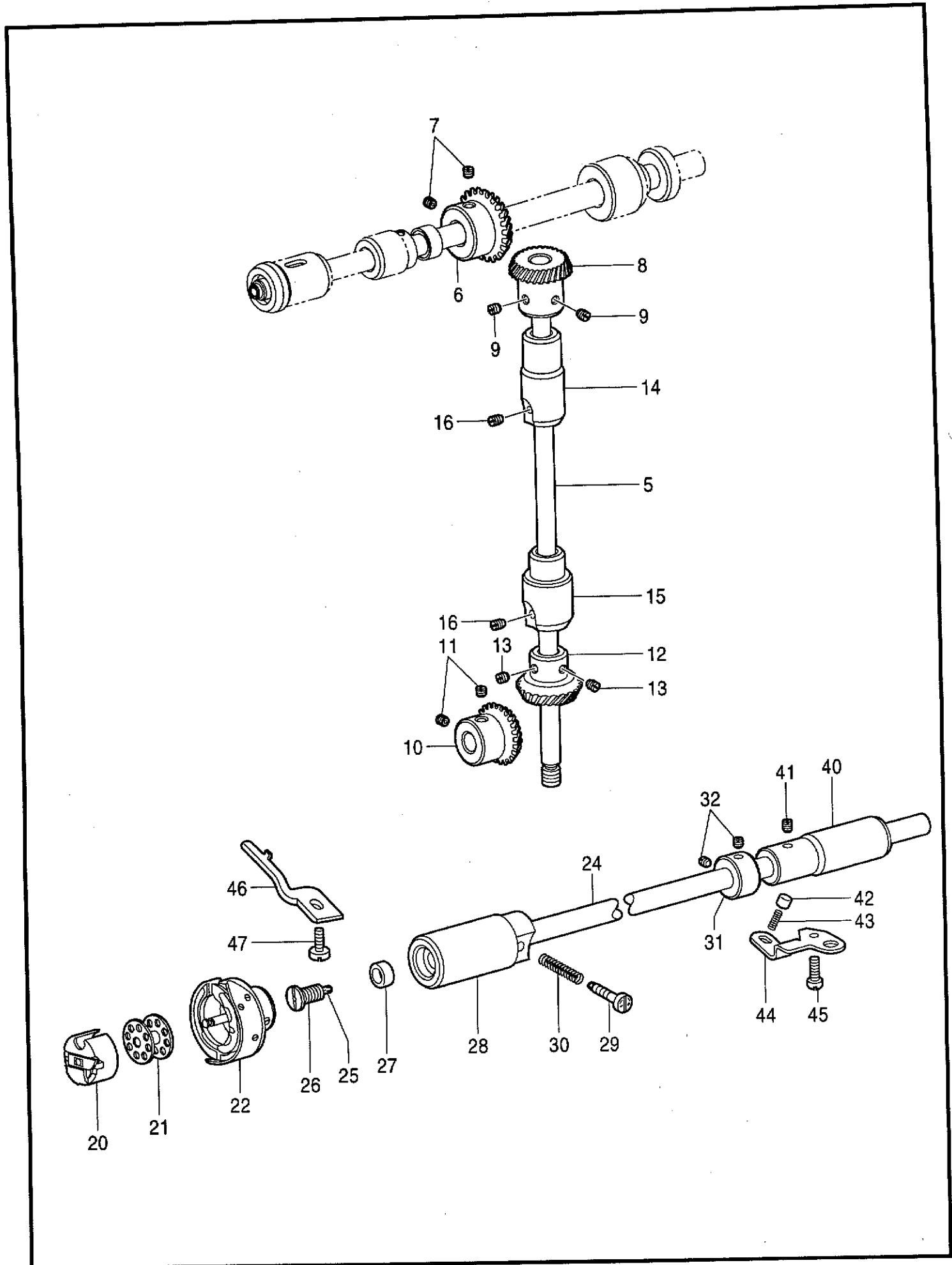
" オプション部品 / OPTION PARTS "

| | | | | |
|-----|-----|-----|-----|-----|
| 7-2 | 7-3 | 7-4 | 7-5 | 7-6 |
| | | | | |

E. 上送り関係 / Upper feed mechanism / Obertransportvorrichtung
 / Mécanisme de l'entraînement supérieur / Mecanismo de la alimentación superior

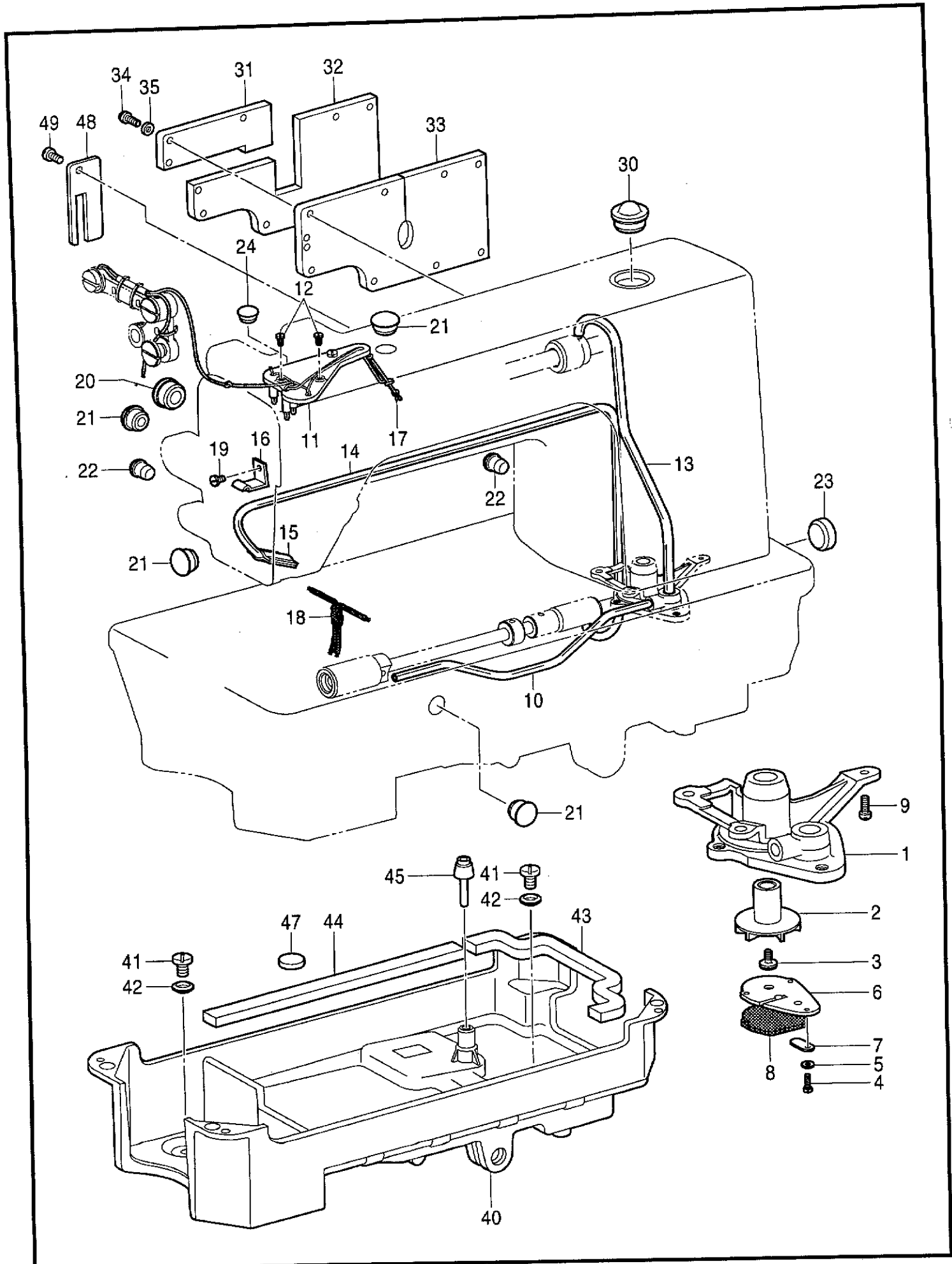
| REF.NO. | CODE | Q'TY | ヒンメイ | NAME OF PARTS | RM |
|---------|-----------|------|----------------|------------------------|----|
| 60 | SW0270001 | 1 | オクリウデRシメネジ | SCREW, SM6.35-24X17 | |
| 61 | SW0236001 | 1 | ナツト | NUT, SM7.14 | |
| 62 | SW0271001 | 1 | Uスイハイオクリジクメタル | BUSH | |
| 63 | SW0041001 | 1 | トメネジ595X28X5 | SET SCREW, SM5.95-28X5 | |
| 70 | SW0012001 | 1 | セットカラー | SET SCREW COLLAR | |
| 71 | SW0013001 | 2 | トメネジ635X40X4 | SET SCREW, SM6.35-40X4 | |
| 72 | SW0282001 | 1 | UスイハイオクリジクメタルL | BUSH, L | |
| 73 | SW0041001 | 1 | トメネジ595X28X5 | SET SCREW, SM5.95-28X5 | |
| 74 | SW0283001 | 1 | U-UDオクリウデR | FEED ARM, R | |
| 75 | SW0270001 | 1 | オクリウデRシメネジ | SCREW, SM6.35-24X17 | |
| 76 | SW0284001 | 1 | ウワオクリメタル | BUSH | |
| 77 | SW0041001 | 1 | トメネジ595X28X5 | SET SCREW, SM5.95-28X5 | |
| 78 | SW0284001 | 1 | ウワオクリメタル | BUSH | |
| 79 | SW0041001 | 1 | トメネジ595X28X5 | SET SCREW, SM5.95-28X5 | |
| 80 | SW0466001 | 1 | UスイハイオクリジクメタルM | BUSH, M | |
| 81 | SW0041001 | 1 | トメネジ595X28X5 | SET SCREW, SM5.95-28X5 | |
| 82 | SW0497001 | 2 | スプリングピンAW3 | PIN, SPRING AW3 | |

F . カマ関係 / Rotary hook mechanism / Greifervorrichtung / M canisme du crochet rotatif / Mecanismo del cangrejo



F. カマ関係 / Rotary hook mechanism / Greifervorrichtung / Mécanisme du crochet rotatif / Mecanismo del cangrejo

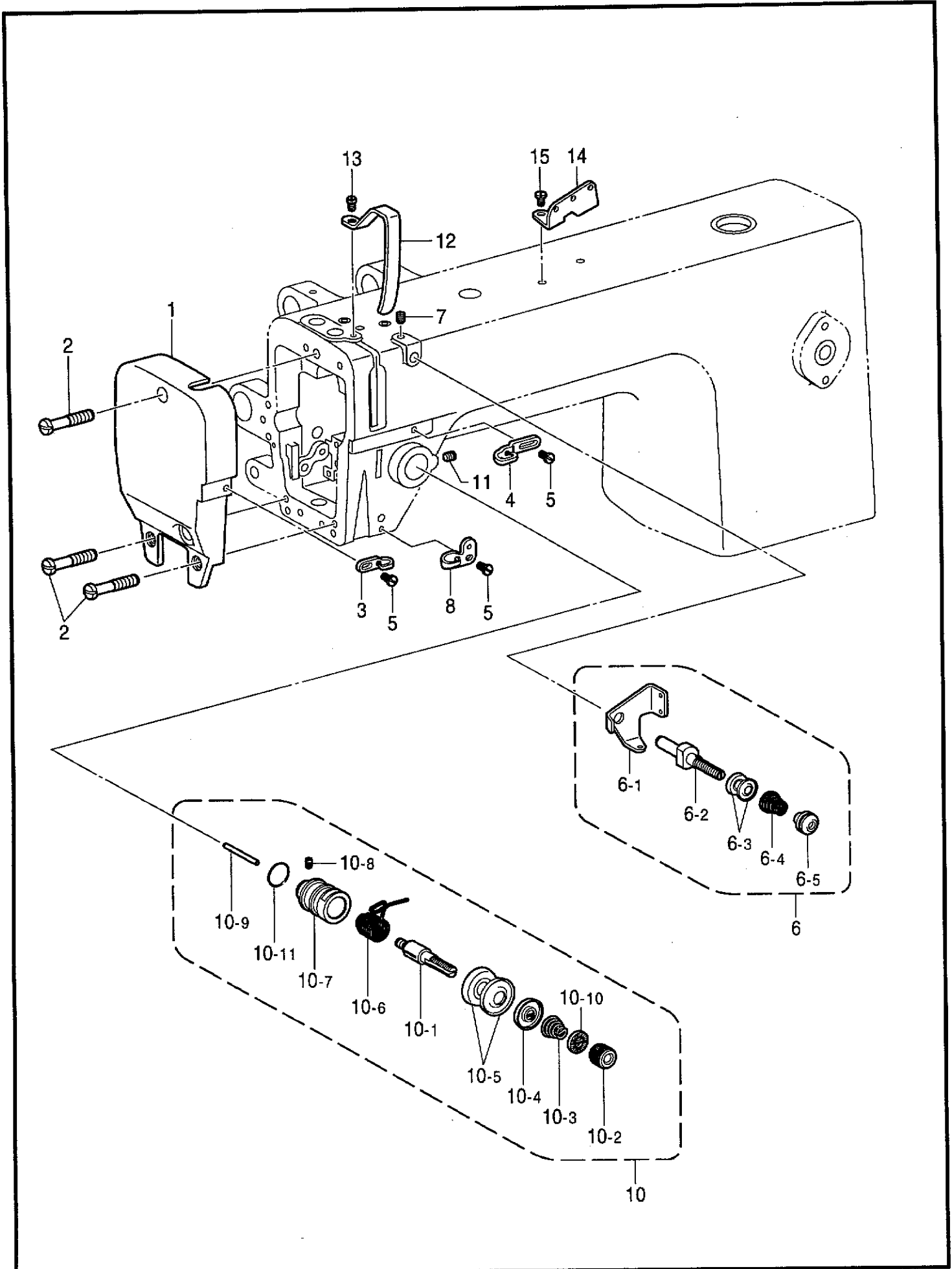
| REF.NO. | CODE | Q'TY | 品名 | NAME OF PARTS | RM |
|---------|-----------|------|---------------|-------------------------|----|
| 5 | SW0294001 | 1 | タテジク | VERTICAL SHAFT | |
| 6 | SW0295001 | 1 | ウワジクベベルギヤ | BEVEL GEAR | |
| 7 | SW0033001 | 2 | トメネジ635X40X7 | SET SCREW, SM6.35-40X7 | |
| 8 | SW0297001 | 1 | タテジクベベルギヤU | BEVEL GEAR, U | |
| 9 | SW0033001 | 2 | トメネジ635X40X7 | SET SCREW, SM6.35-40X7 | |
| 10 | SW0298001 | 1 | シタジクベベルギヤ | BEVEL GEAR | |
| 11 | SW0033001 | 2 | トメネジ635X40X7 | SET SCREW, SM6.35-40X7 | |
| 12 | SW0299001 | 1 | タテジクベベルギヤD | BEVEL GEAR, D | |
| 13 | SW0033001 | 2 | トメネジ635X40X7 | SET SCREW, SM6.35-40X7 | |
| 14 | SW0300001 | 1 | タテジクメタルU | BUSH, U | |
| 15 | SW0301001 | 1 | タテジクメタルD | BUSH, D | |
| 16 | SW0016001 | 2 | トメネジ595X28X10 | SET SCREW, SM5.95-28X10 | |
| 20 | SW0310001 | 1 | ボビンケースクミ | BOBBIN CASE ASSY | |
| 21 | SW0311001 | 1 | ボビン | BOBBIN | |
| 22 | SW0312901 | 1 | コウソクカマハコクミ | ROTARY HOOK ASSY, W/BOX | |
| 24 | SW0314001 | 1 | シタジク | LOWER SHAFT | |
| 25 | SW0315001 | 1 | フィルター | FILTER | |
| 26 | SW0316001 | 1 | フィルターセンネジ | CAP SCREW, SM4.76 | |
| 27 | SW0317001 | 1 | シタジクオイルシール | OIL SEAL | |
| 28 | SW0318001 | 1 | シタジクメタルL | BUSH, L | |
| 29 | SW0319001 | 1 | オイルチヨウセツネジ | ADJUSTING SCREW | |
| 30 | SW0320001 | 1 | オイルチヨウセツネジバネ | SPRING | |
| 31 | SW0321001 | 1 | セツトカラー | SET SCREW COLLAR | |
| 32 | SW0041001 | 2 | トメネジ595X28X5 | SET SCREW, SM5.95-28X5 | |
| 40 | SW0330001 | 1 | シタジクメタルR | BUSH, R | |
| 41 | SW0079001 | 1 | トメネジ595X28X8 | SET SCREW, SM5.95-28X8 | |
| 42 | SW0332001 | 1 | プランジャー | PLUNGER | |
| 43 | SW0333001 | 1 | プランジャーバネ | SPRING, COMPRESSION | |
| 44 | SW0334001 | 1 | プランジャーウケイタ | HOLDER PLATE | |
| 45 | SW0335001 | 1 | シメネジ | SCREW, SM4.37-40X13 | |
| 46 | SW0336001 | 1 | ウチカマトメ | HOLDER | |
| 47 | SW0079001 | 1 | トメネジ595X28X8 | SET SCREW, SM5.95-28X8 | |



G. 給油潤滑関係 / Lubrication / Schmierung / Lubrification / Lubricación

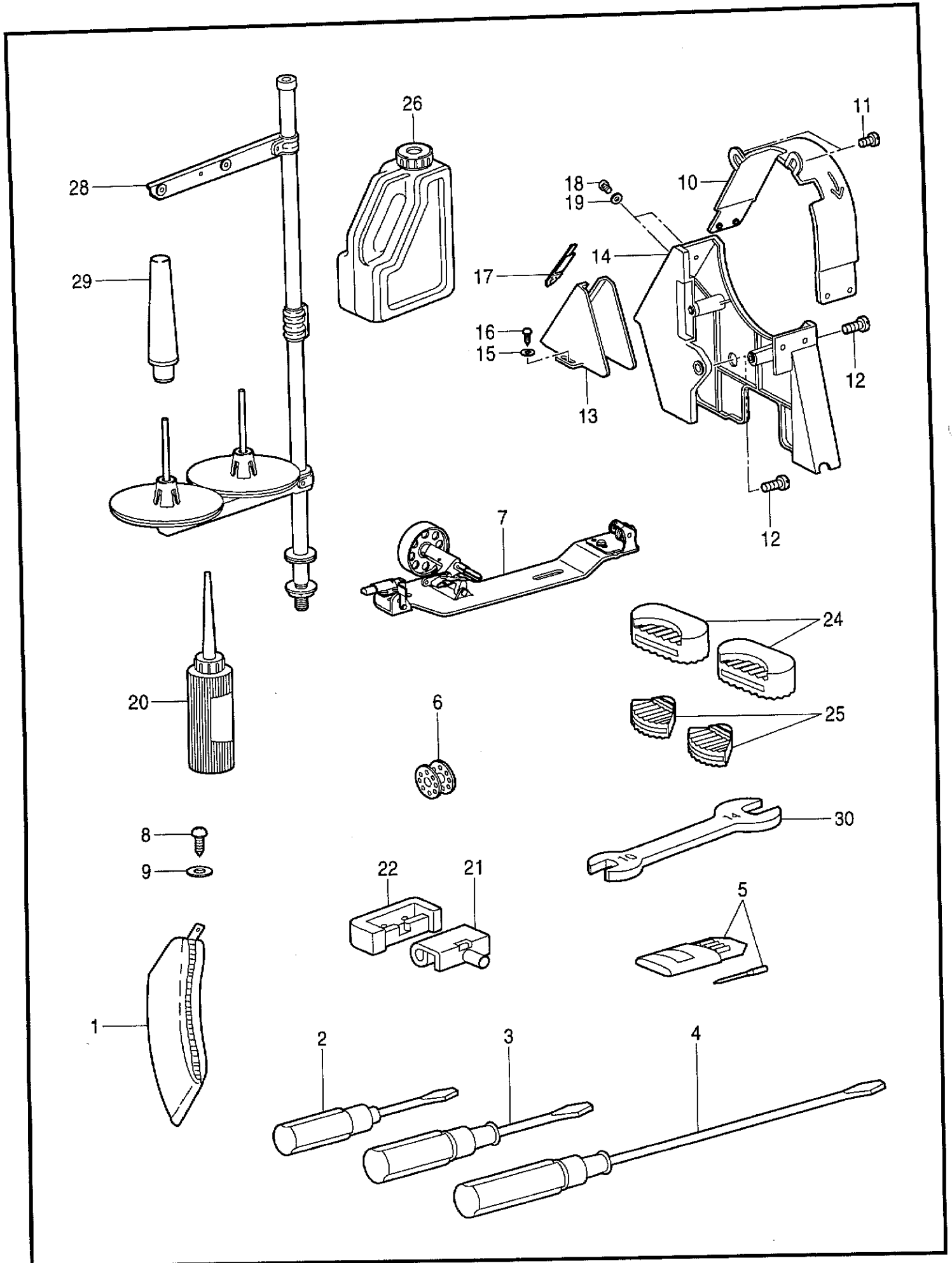
| REF.NO. | CODE | Q'TY | ヒンメイ | NAME OF PARTS | RM |
|---------|-----------|------|---------------|----------------------|----|
| 1 | SW0350001 | 1 | ポンプタイ | PUMP BODY | |
| 2 | SW0351001 | 1 | ポンプカイテンヨク | PUMP PROPELLER | |
| 3 | SW0352001 | 1 | カイテンヨクシメネジ | SCREW, SM3.18-44X6.5 | |
| 4 | SW0353001 | 3 | シボリイタトメネジ | SCREW, SM3.18-44X13 | |
| 5 | SW0354001 | 1 | ワツシャー | WASHER, PLAIN | |
| 6 | SW0355001 | 1 | カイテンヨクフタ | COVER | |
| 7 | SW0356001 | 1 | リユウリヨウシボリイタ | THROTTLE PLATE | |
| 8 | SW0357001 | 1 | ポンプフィルターセット | FILTER SET | |
| 9 | SW0335001 | 3 | シメネジ | SCREW, SM4.37-40X13 | |
| 10 | SW0359001 | 1 | オイルチューブD | OILTUBE, D | |
| 11 | SW0360001 | 1 | アブラヒモトリツケイタ | SETTING PLATE | |
| 12 | SW0361001 | 2 | トリツケイタシメネジ | SCREW, SM3.57-40X11 | |
| 13 | SW0362001 | 1 | オイルチューブU | OIL TUBE, U | |
| 14 | SW0363001 | 1 | チューブクミ | TUBE ASSY | |
| 15 | SW0364001 | 1 | フェルトオサエ | FELT SUPPORT | |
| 16 | SW0365001 | 1 | チューブクミササエ | SUPPORTER | |
| 17 | SW0366001 | 1 | キユウユヒモ | OIL WICK | |
| 18 | SW0367001 | 1 | オクリジククミヒモ | OIL WICK | |
| 19 | SW0086001 | 1 | シメネジ437X40X6 | SCREW, SM4.37-40X6 | |
| 20 | SW0370001 | 1 | ゴムセン | RUBBER CAP | |
| 21 | SW0371001 | 4 | ゴムセン | RUBBER CAP | |
| 22 | SW0372001 | 2 | ゴムセン | RUBBER CAP | |
| 23 | SW0373001 | 1 | ゴムセン | RUBBER CAP | |
| 24 | SW0374001 | 1 | ゴムセン | RUBBER CAP | |
| 30 | SW0380001 | 1 | ユリヨウケイマド | OIL WINDOW | |
| 31 | SW0381001 | 1 | ガワイタS | REAR COVER, S | |
| 32 | SW0382001 | 1 | ガワイタL | REAR COVER, L | |
| 33 | SW0383001 | 1 | ガワイタハツキング | PACKING | |
| 34 | SW0384001 | 10 | ガワイタシメネジ | SCREW, SM4.37-40X9 | |
| 35 | SW0385001 | 10 | ガワイタシメネジワツシャー | WASHER, PLAIN | |
| 40 | SW0390001 | 1 | オイルパン | OIL PAN | |
| 41 | SW0391001 | 2 | アブラヌキネジ | SCREW, SM7.94-28X10 | |
| 42 | SW0392001 | 2 | アブラヌキリング | RING | |
| 43 | SW0393001 | 1 | アブラヌキパツキンS | PACKING, S | |
| 44 | SW0394001 | 1 | アブラヌキパツキンL | PACKING, L | |
| 45 | SW0395001 | 1 | ヒザアゲオシボウ | KNEE LIFTRING BAR | |
| 47 | SW0397001 | 1 | ジシャク | MAGNET | |
| 48 | SW0490001 | 1 | オイルシャヘイカバーS | COVER, S | |
| 49 | SW0491001 | 1 | カバーシメネジ | SCREW, SM4.37-40X6 | |

H. 糸通シ関係 / Threading mechanism / Fadenführungsrichtung / Mécanisme de l'enfilage / Mecanismo del enhebrado



H. 糸通シ関係 / Threading mechanism / FadenführungsVorrichtung / Mécanisme de l'enfilage / Mecanismo del enhebrado

| REF.NO. | CODE | Q'TY | ヒンメイ | NAME OF PARTS | RM |
|---------|-----------|------|----------------|-----------------------------|----|
| 1 | SW0410001 | 1 | メンイタ | FACE PLATE | |
| 2 | SW0411001 | 3 | メンイタシメネジ | SCREW, SM4.37-40X20 | |
| 3 | SW0412001 | 1 | アームイトアンナイ | THREAD GUIDE | |
| 4 | SW0413001 | 1 | アームイトアンナイD | THREAD GUIDE, D | |
| 5 | SW0414001 | 3 | アームイトアンナイトメネジ | SCREW, SM3.57-40X6 | |
| 6 | SW0415001 | 1 | イトアンナイクミ | THREAD GUIDE ASSY | |
| 6-1 | SW0416001 | 1 | イトアンナイ | THREAD GUIDE | |
| 6-2 | SW0417001 | 1 | イトアンナイチヨウシボウ | PRE-TENSION STUD | |
| 6-3 | SW0418001 | 2 | イトアンナイサラ | DISC, THREAD GUIDE | |
| 6-4 | SW0419001 | 1 | プレテンションバネ | SPRING | |
| 6-5 | SW0420001 | 1 | イトアンナイチヨウシネジ | ADJUSTING SCREW | |
| 7 | SW0421001 | 1 | イトアンナイクミトリツケネジ | SET SCREW, SM4.37-40X5.5 | |
| 8 | SW0492001 | 1 | アームイトアンナイB | THREAD GUIDE, B | |
| 10 | SW0430001 | 1 | イトチヨウシボウクミ | THREAD TENSION BRACKET ASSY | |
| 10-1 | SW0431001 | 1 | イトチヨウシボウ | TENSION STUD | |
| 10-2 | SW0432001 | 1 | イトチヨウシナツト | TENSION NUT | |
| 10-3 | SW0433001 | 1 | イトチヨウシバネ | TENSION SPRING | |
| 10-4 | SW0434001 | 1 | イトチヨウシサラオサエ | DISC PRESSER | |
| 10-5 | SW0435001 | 2 | イトチヨウシサラ | DISC, TENSION | |
| 10-6 | SW0436001 | 1 | イトトリバネ | SPRING | |
| 10-7 | SW0437001 | 1 | イトチヨウシボウダイ | THREAD TENSION BRACKET | |
| 10-8 | SW0438001 | 1 | イトチヨウシボウトメネジ | SET SCREW, SM3.57-40X6 | |
| 10-9 | SW0439001 | 1 | イトユルメピン | PIN | |
| 10-10 | SW0440001 | 1 | ローレットストツバ | STOPPER | |
| 10-11 | SW0441001 | 1 | Oリング | O RING | |
| 11 | SW0079001 | 1 | トメネジ595X28X8 | SET SCREW, SM5.95-28X8 | |
| 12 | SW0443001 | 1 | テンピンカバー | THREAD TAKE-UP LEVER COVER | |
| 13 | SW0086001 | 1 | シメネジ437X40X6 | SCREW, SM4.37-40X6 | |
| 14 | SW0445001 | 1 | イトカケ | THREAD RETAINER | |
| 15 | SW0446001 | 1 | イトカケシメネジ | SCREW, SM4.37-40X8 | |



Z. 付属品関係 / Accessories / Zubehör / Accessoires / Accesorios

| REF.NO. | CODE | Q'TY | 品名 | NAME OF PARTS | RM |
|---------|-----------|------|-----------------|--------------------------|----|
| 1 | SW0460001 | 1 | フゾクヒンフクロ | ACCESSORY BAG | |
| 2 | 142443021 | 1 | ネジマワシ1.9X52 | SCREW DRIVER, 1.9X52 | |
| 3 | 118837021 | 1 | ネジマワシ3.4X70 | SCREW DRIVER, 3.4X70 | |
| 4 | S17774021 | 1 | ネジマワシ4.7X250 | SCREW DRIVER, 4.7X250 | |
| 5 | 145646423 | 1 | ミシンハリDPX17#23クミ | NEEDLE ASSY, DPX17 (#23) | |
| 6 | SW0465001 | 5 | ボビン | BOBBIN | |
| 7 | S14420220 | 1 | イトマキキクミ | BOBBIN WINDER ASSY | |
| 8 | SW0467001 | 2 | イトマキキモクネジ | WOOD SCREW, ROUND M5X20 | |
| 9 | SW0468001 | 2 | イトマキキワツシヤー | WASHER, PLAIN | |
| 10 | SW0469001 | 1 | ベルトカバーU | BELT COVER, U | |
| 11 | SW0493001 | 2 | シメネジM4X0.7X8 | SCREW, M4-0.7X8 | |
| 12 | SW0494001 | 2 | シメネジM5X0.8X12 | SCREW, M5-0.8X12 | |
| 13 | SW0472001 | 1 | ベルトカバーD | BELT COVER, D | |
| 14 | SW0473001 | 1 | ベルトカバー | BELT COVER | |
| 15 | SW0474001 | 2 | ベルトカバーDワツシヤー | WASHER, PLAIN | |
| 16 | SW0475001 | 2 | ベルトカバーモクネジ | WOOD SCREW, ROUND M5X20 | |
| 17 | S37264001 | 1 | ベルトカバーDフタS | LID, S B-COVER(S) | |
| 18 | SW0495001 | 4 | シメネジM4X0.7X5 | SCREW, M4-0.7X5 | |
| 19 | SW0496001 | 4 | ワツシヤー | WASHER, PLAIN | |
| 20 | SSSS58125 | 1 | アブラサシ | OILER | |
| 21 | SW0481001 | 2 | トウブヒンジ | HEAD HINGE | |
| 22 | SW0482001 | 2 | トウブヒンジウケゴム | RUBBER CUSHION | |
| 24 | SW0484001 | 2 | トウブシキゴムF | HEAD CUSHION, F | |
| 25 | SW0485001 | 2 | トウブシキゴムB | HEAD CUSHION, B | |
| 26 | S35822121 | 1 | オイルタンク | OIL TANK | |
| 28 | SW0488001 | 1 | イトタテダイクミ | COTTON STAND ASSY | |
| 29 | 100477029 | 1 | マクラ | HEAD REST | |
| 30 | SW0047001 | 1 | スパナ14X10 | WRENCH, 14X10 | |

Ga. ゲージ部品一覧表 / Gauge parts List / Lehrenliste / Liste des Pièces de department / Lista d'ePiezas de calibradores

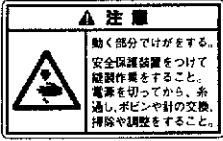


◎標準ゲージ / Standard Gauge

| 針板 Needle Plate | 送り歯 Feed Dog | 標準押え Standard Feet | | |
|---|--|-----------------------|---------------------|----------------------------------|
| | | 送り足 Walking Foot | 押え足 Presser Foot | 押え足クミ Presser Foot Assy, W/FG |
| <p>φ 2.5 R 1 (溝) T 2.6</p> <p>10.0 10.8 2.5 5.5 26.5 14.5 3.2 4.6</p> <p>SW0057-001</p> | <p>P 1.6 H 6.6</p> <p>27.5 18.5 10.5 9.6 11.1 3.5 14.5 3.8</p> <p>SW0120-001</p> | <p>SW0216-001</p> | <p>SW0083-001</p> | <p>SW0105-001</p> |

◎オプションゲージ / Option Gauge

| パイピング用押え Feet for Piping | | 小物縫い用押え Narrow type feet for small parts | | リバース押え Reverse Feet | | |
|---|---------------------|---|---------------------|------------------------|---------------------|-------------------------------------|
| 送り足 Walking Foot | 押え足 Presser Foot | 送り足 Walking Foot | 押え足 Presser Foot | 送り足 Walking Foot | 押え足 Presser Foot | 押え足Rクミ Presser Foot Assy, R-W/FG |
| <p>151847-001 6.4mm (1/4) 151848-001 7.9mm(5/16) 151849-001 9.5mm (3/8)</p> | <p>151850-001</p> | <p>151851-001</p> | <p>151852-001</p> | <p>S04501-001</p> | <p>S04502-101</p> | <p>S36917-001</p> |

Wa. 警告ラベル / Warning labels / Warnschilder / Etiquettes d'avertissement
/ Etiquetas de advertencia

| 警告ラベル / Warning labels | 品名 / Name of Parts | Size(mm) | Code |
|---|---------------------------|----------|------------|
|  | 操作注意ラベル・和 | 40X64 | S38350-001 |
|  | Label, operation Eng. | 40X64 | S38349-001 |
|  | アースマーク Mark, grounding | φ 12 | S37060-001 |

索引 / INDEX / VERZEICHNIS
/ INDEX / INDICE

| CODE | REF.NO. | Page |
|-----------|---------|------|
| SSSS58125 | Z -20 | 22 |
| SW0003001 | A -3 | 2 |
| SW0004001 | A -4 | 2 |
| SW0005001 | A -5 | 2 |
| SW0006001 | A -6 | 2 |
| SW0010001 | B -1 | 4 |
| SW0011001 | B -2 | 4 |
| SW0012001 | B -3 | 4 |
| | E -70 | 14 |
| SW0013001 | B -4 | 4 |
| | D -13 | 8 |
| | D -30 | 8 |
| | E -71 | 14 |
| SW0014001 | B -5 | 4 |
| SW0015001 | B -6 | 4 |
| SW0016001 | B -7 | 4 |
| | B -21 | 4 |
| | D -28 | 8 |
| | D -47 | 8 |
| | F -16 | 16 |
| SW0017001 | B -8 | 4 |
| SW0018001 | B -9 | 4 |
| SW0019001 | B -10 | 4 |
| SW0020001 | B -11 | 4 |
| | C -55 | 6 |
| SW0021001 | B -12 | 4 |
| SW0030001 | B -20 | 4 |
| SW0032001 | B -22 | 4 |
| SW0033001 | B -23 | 4 |
| | F -7 | 16 |
| | F -9 | 16 |
| | F -11 | 16 |
| | F -13 | 16 |
| SW0034001 | B -24 | 4 |
| SW0035001 | B -25 | 4 |
| SW0036001 | B -26 | 4 |
| SW0040001 | B -30 | 4 |
| SW0041001 | B -31 | 4 |
| | D -27 | 8 |
| | E -63 | 14 |
| | E -73 | 14 |
| | E -77 | 14 |
| | E -79 | 14 |
| | E -81 | 14 |
| | F -32 | 16 |
| SW0042001 | B -32 | 4 |
| SW0043001 | B -33 | 4 |
| SW0044001 | B -34 | 4 |
| | C -41 | 6 |
| SW0045001 | B -35 | 4 |
| SW0046001 | B -36 | 4 |
| SW0047001 | Z -30 | 22 |
| SW0048001 | B -38 | 4 |
| SW0049001 | B -39 | 4 |
| SW0050001 | B -40 | 4 |
| SW0051001 | B -41 | 4 |
| SW0052001 | B -42 | 4 |
| SW0053001 | B -43 | 4 |
| SW0054001 | B -43-1 | 4 |
| SW0055001 | B -43-2 | 4 |
| SW0056001 | B -43-3 | 4 |
| SW0057001 | B -44 | 4 |
| | Ga | 23 |

| CODE | REF.NO. | Page |
|-----------|---------|------|
| SW0058001 | B -45 | 4 |
| SW0060001 | C -1 | 6 |
| SW0061001 | C -2 | 6 |
| SW0062001 | C -3 | 6 |
| SW0063001 | C -4 | 6 |
| SW0064001 | C -5 | 6 |
| SW0065001 | C -6 | 6 |
| SW0066001 | C -7 | 6 |
| SW0067001 | C -8 | 6 |
| SW0068001 | C -9 | 6 |
| SW0069001 | C -11 | 6 |
| SW0070001 | C -15 | 6 |
| SW0071001 | C -16 | 6 |
| SW0072001 | C -17 | 6 |
| SW0073001 | C -18 | 6 |
| SW0074001 | C -19 | 6 |
| SW0075001 | C -20 | 6 |
| SW0076001 | C -30 | 6 |
| SW0077001 | C -31 | 6 |
| SW0078001 | C -32 | 6 |
| SW0079001 | C -33 | 6 |
| | F -41 | 16 |
| | F -47 | 16 |
| | H -11 | 20 |
| SW0080001 | C -34 | 6 |
| SW0081001 | C -35 | 6 |
| SW0082001 | C -36 | 6 |
| SW0083001 | C -37-1 | 6 |
| | Ga | 23 |
| SW0084001 | C -38 | 6 |
| SW0085001 | C -39 | 6 |
| SW0086001 | C -40 | 6 |
| | C -43 | 6 |
| | G -19 | 18 |
| | H -13 | 20 |
| SW0088001 | C -42 | 6 |
| SW0090001 | C -50 | 6 |
| SW0091001 | C -51 | 6 |
| SW0092001 | C -52 | 6 |
| SW0093001 | C -53 | 6 |
| SW0094001 | C -54 | 6 |
| SW0096001 | C -56 | 6 |
| SW0097001 | C -57 | 6 |
| SW0098001 | C -58 | 6 |
| SW0100001 | C -60 | 6 |
| SW0101001 | C -61 | 6 |
| SW0103001 | C -63 | 6 |
| SW0104001 | C -64 | 6 |
| SW0105001 | C -37-3 | 6 |
| | Ga | 23 |
| SW0120001 | D -1 | 8 |
| | Ga | 23 |
| SW0121001 | D -2 | 8 |
| SW0122001 | D -3 | 8 |
| SW0123001 | D -4 | 8 |
| SW0124001 | D -5 | 8 |
| SW0125001 | D -6 | 8 |
| SW0126001 | D -7 | 8 |
| | D -20 | 8 |
| | E -46 | 12 |
| SW0127001 | D -8 | 8 |
| SW0128001 | D -9 | 8 |
| SW0129001 | D -10 | 8 |

| CODE | REF.NO. | Page |
|-----------|---------|------|
| SW0129001 | D -31 | 8 |
| SW0130001 | D -11 | 8 |
| | D -33 | 8 |
| SW0131001 | D -12 | 8 |
| | D -29 | 8 |
| SW0133001 | D -14 | 8 |
| SW0134001 | D -15 | 8 |
| SW0135001 | D -16 | 8 |
| | D -76 | 10 |
| | E -47 | 12 |
| SW0136001 | D -17 | 8 |
| | D -42 | 8 |
| | D -84 | 10 |
| | E -44 | 12 |
| SW0137001 | D -18 | 8 |
| SW0138001 | D -19 | 8 |
| SW0140001 | D -21 | 8 |
| SW0141001 | D -22 | 8 |
| | D -23 | 8 |
| SW0142001 | D -24 | 8 |
| | D -34 | 8 |
| SW0143001 | D -25 | 8 |
| SW0144001 | D -26 | 8 |
| SW0150001 | D -32 | 8 |
| SW0160001 | D -40 | 8 |
| SW0161001 | D -41 | 8 |
| SW0163001 | D -43 | 8 |
| SW0164001 | D -44 | 8 |
| SW0165001 | D -45 | 8 |
| SW0166001 | D -46 | 8 |
| SW0170001 | D -50 | 8 |
| SW0171001 | D -51 | 8 |
| SW0172001 | D -52 | 8 |
| SW0173001 | D -53 | 8 |
| SW0174001 | D -54 | 8 |
| SW0175001 | D -55 | 8 |
| SW0176001 | D -48 | 8 |
| | D -56 | 8 |
| SW0177001 | D -57 | 8 |
| SW0178001 | D -58 | 8 |
| SW0179001 | D -59 | 8 |
| SW0180001 | D -60 | 8 |
| SW0181001 | D -61 | 8 |
| SW0182001 | D -62 | 8 |
| SW0183001 | D -63 | 8 |
| SW0184001 | D -64 | 8 |
| SW0185001 | D -65 | 10 |
| SW0186001 | D -66 | 10 |
| SW0190001 | D -70 | 10 |
| SW0191001 | D -71 | 10 |
| SW0192001 | D -72 | 10 |
| SW0193001 | D -73 | 10 |
| SW0194001 | D -74 | 10 |
| SW0195001 | D -75 | 10 |
| SW0197001 | D -77 | 10 |
| SW0198001 | D -78 | 10 |
| SW0199001 | D -79 | 10 |
| SW0200001 | D -80 | 10 |
| SW0201001 | D -81 | 10 |
| SW0202001 | D -82 | 10 |
| SW0203001 | D -83 | 10 |
| SW0205001 | D -85 | 10 |
| SW0206001 | D -86 | 10 |

| CODE | REF.NO. | Page |
|-----------|---------|------|
| SW0207001 | D - 87 | 10 |
| SW0208001 | D - 88 | 10 |
| SW0210001 | E - 1 | 12 |
| SW0211001 | E - 2 | 12 |
| SW0212001 | E - 3 | 12 |
| SW0213001 | E - 4 | 12 |
| | E - 31 | 12 |
| SW0214001 | E - 5 | 12 |
| SW0215001 | E - 6 | 12 |
| SW0216001 | E - 7-1 | 12 |
| | Ga | 23 |
| SW0217001 | E - 8 | 12 |
| SW0218001 | E - 9 | 12 |
| SW0219001 | E - 10 | 12 |
| | E - 41 | 12 |
| SW0220001 | E - 11 | 12 |
| SW0221001 | E - 12 | 12 |
| SW0222001 | E - 13 | 12 |
| SW0223001 | E - 14 | 12 |
| SW0224001 | E - 15 | 12 |
| SW0225001 | E - 16 | 12 |
| SW0226001 | E - 17 | 12 |
| SW0227001 | E - 18 | 12 |
| SW0230001 | E - 20 | 12 |
| SW0231001 | E - 21 | 12 |
| SW0232001 | E - 22 | 12 |
| | E - 28 | 12 |
| SW0233001 | E - 23 | 12 |
| SW0234001 | E - 24 | 12 |
| SW0235001 | E - 25 | 12 |
| SW0236001 | E - 26 | 12 |
| | E - 61 | 14 |
| SW0237001 | E - 27 | 12 |
| SW0240001 | E - 30 | 12 |
| SW0242001 | E - 32 | 12 |
| SW0243001 | E - 33 | 12 |
| SW0244001 | E - 34 | 12 |
| SW0245001 | E - 35 | 12 |
| SW0250001 | E - 40 | 12 |
| SW0251001 | E - 42 | 12 |
| SW0252001 | E - 43 | 12 |
| SW0254001 | E - 45 | 12 |
| SW0260001 | E - 50 | 12 |
| SW0261001 | E - 51 | 12 |
| SW0262001 | E - 52 | 12 |
| SW0263001 | E - 53 | 12 |
| SW0264001 | E - 54 | 12 |
| SW0265001 | E - 55 | 12 |
| SW0266001 | E - 56 | 12 |
| SW0267001 | E - 57 | 12 |
| SW0268001 | E - 58 | 12 |
| SW0269001 | E - 59 | 12 |
| SW0270001 | E - 60 | 14 |
| | E - 75 | 14 |
| SW0271001 | E - 62 | 14 |
| SW0282001 | E - 72 | 14 |
| SW0283001 | E - 74 | 14 |
| SW0284001 | E - 76 | 14 |
| | E - 78 | 14 |
| SW0290001 | D - 89 | 10 |
| SW0291001 | D - 90 | 10 |
| SW0292001 | D - 91 | 10 |
| SW0293001 | D - 92 | 10 |

| CODE | REF.NO. | Page |
|-----------|---------|------|
| SW0294001 | F - 5 | 16 |
| SW0295001 | F - 6 | 16 |
| SW0297001 | F - 8 | 16 |
| SW0298001 | F - 10 | 16 |
| SW0299001 | F - 12 | 16 |
| SW0300001 | F - 14 | 16 |
| SW0301001 | F - 15 | 16 |
| SW0310001 | F - 20 | 16 |
| SW0311001 | F - 21 | 16 |
| SW0312901 | F - 22 | 16 |
| SW0314001 | F - 24 | 16 |
| SW0315001 | F - 25 | 16 |
| SW0316001 | F - 26 | 16 |
| SW0317001 | F - 27 | 16 |
| SW0318001 | F - 28 | 16 |
| SW0319001 | F - 29 | 16 |
| SW0320001 | F - 30 | 16 |
| SW0321001 | F - 31 | 16 |
| SW0330001 | F - 40 | 16 |
| SW0332001 | F - 42 | 16 |
| SW0333001 | F - 43 | 16 |
| SW0334001 | F - 44 | 16 |
| SW0335001 | F - 45 | 16 |
| | G - 9 | 18 |
| SW0336001 | F - 46 | 16 |
| SW0350001 | G - 1 | 18 |
| SW0351001 | G - 2 | 18 |
| SW0352001 | G - 3 | 18 |
| SW0353001 | G - 4 | 18 |
| SW0354001 | G - 5 | 18 |
| SW0355001 | G - 6 | 18 |
| SW0356001 | G - 7 | 18 |
| SW0357001 | G - 8 | 18 |
| SW0359001 | G - 10 | 18 |
| SW0360001 | G - 11 | 18 |
| SW0361001 | G - 12 | 18 |
| SW0362001 | G - 13 | 18 |
| SW0363001 | G - 14 | 18 |
| SW0364001 | G - 15 | 18 |
| SW0365001 | G - 16 | 18 |
| SW0366001 | G - 17 | 18 |
| SW0367001 | G - 18 | 18 |
| SW0370001 | G - 20 | 18 |
| SW0371001 | G - 21 | 18 |
| SW0372001 | G - 22 | 18 |
| SW0373001 | G - 23 | 18 |
| SW0374001 | G - 24 | 18 |
| SW0380001 | G - 30 | 18 |
| SW0381001 | G - 31 | 18 |
| SW0382001 | G - 32 | 18 |
| SW0383001 | G - 33 | 18 |
| SW0384001 | G - 34 | 18 |
| SW0385001 | G - 35 | 18 |
| SW0390001 | G - 40 | 18 |
| SW0391001 | G - 41 | 18 |
| SW0392001 | G - 42 | 18 |
| SW0393001 | G - 43 | 18 |
| SW0394001 | G - 44 | 18 |
| SW0395001 | G - 45 | 18 |
| SW0396001 | C - 65 | 6 |
| SW0397001 | G - 47 | 18 |
| SW0410001 | H - 1 | 20 |
| SW0411001 | H - 2 | 20 |

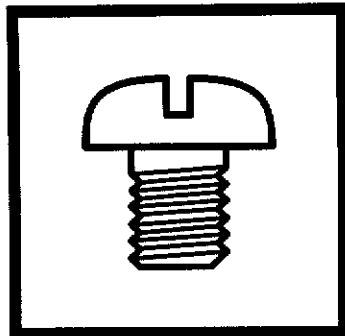
| CODE | REF.NO. | Page |
|-----------|-----------|------|
| SW0412001 | H - 3 | 20 |
| SW0413001 | H - 4 | 20 |
| SW0414001 | H - 5 | 20 |
| SW0415001 | H - 6 | 20 |
| SW0416001 | H - 6-1 | 20 |
| SW0417001 | H - 6-2 | 20 |
| SW0418001 | H - 6-3 | 20 |
| SW0419001 | H - 6-4 | 20 |
| SW0420001 | H - 6-5 | 20 |
| SW0421001 | H - 7 | 20 |
| SW0430001 | H - 10 | 20 |
| SW0431001 | H - 10-1 | 20 |
| SW0432001 | H - 10-2 | 20 |
| SW0433001 | H - 10-3 | 20 |
| SW0434001 | H - 10-4 | 20 |
| SW0435001 | H - 10-5 | 20 |
| SW0436001 | H - 10-6 | 20 |
| SW0437001 | H - 10-7 | 20 |
| SW0438001 | H - 10-8 | 20 |
| SW0439001 | H - 10-9 | 20 |
| SW0440001 | H - 10-10 | 20 |
| SW0441001 | H - 10-11 | 20 |
| SW0443001 | H - 12 | 20 |
| SW0445001 | H - 14 | 20 |
| SW0446001 | H - 15 | 20 |
| SW0460001 | Z - 1 | 22 |
| SW0465001 | Z - 6 | 22 |
| SW0466001 | E - 80 | 14 |
| SW0467001 | Z - 8 | 22 |
| SW0468001 | Z - 9 | 22 |
| SW0469001 | Z - 10 | 22 |
| SW0472001 | Z - 13 | 22 |
| SW0473001 | Z - 14 | 22 |
| SW0474001 | Z - 15 | 22 |
| SW0475001 | Z - 16 | 22 |
| SW0481001 | Z - 21 | 22 |
| SW0482001 | Z - 22 | 22 |
| SW0484001 | Z - 24 | 22 |
| SW0485001 | Z - 25 | 22 |
| SW0488001 | Z - 28 | 22 |
| SW0489001 | B - 46 | 4 |
| SW0490001 | G - 48 | 18 |
| SW0491001 | G - 49 | 18 |
| SW0492001 | H - 8 | 20 |
| SW0493001 | Z - 11 | 22 |
| SW0494001 | Z - 12 | 22 |
| SW0495001 | Z - 18 | 22 |
| SW0496001 | Z - 19 | 22 |
| SW0497001 | E - 82 | 14 |
| S04501001 | E - 7-2 | 12 |
| | Ga | 23 |
| S04502101 | C - 37-2 | 6 |
| | Ga | 23 |
| S14420220 | Z - 7 | 22 |
| S17774021 | Z - 4 | 22 |
| S31885001 | C - 62 | 6 |
| S34756001 | C - 59 | 6 |
| S35822121 | Z - 26 | 22 |
| S36917001 | C - 37-4 | 6 |
| | Ga | 23 |
| S37060001 | Wa | 24 |
| S37264001 | Z - 17 | 22 |
| S38349001 | Wa | 24 |

| CODE | REF.NO. | Page |
|-----------|---------|------|
| S38350001 | Wa | 24 |
| 100477029 | Z -29 | 22 |
| 118837021 | Z -3 | 22 |
| 142443021 | Z -2 | 22 |
| 145646023 | B -37 | 4 |
| 145646423 | Z -5 | 22 |
| 151847001 | E -7-3 | 12 |
| | Ga | 23 |
| 151848001 | E -7-4 | 12 |
| | Ga | 23 |
| 151849001 | E -7-5 | 12 |
| | Ga | 23 |
| 151850001 | C -37-5 | 6 |
| | Ga | 23 |
| 151851001 | E -7-6 | 12 |
| | Ga | 23 |
| 151852001 | C -37-6 | 6 |
| | Ga | 23 |

| CODE | REF.NO. | Page |
|------|---------|------|
| | | |

| CODE | REF.NO. | Page |
|------|---------|------|
| | | |

brother



パーツブック
PARTS BOOK
TEILEKATALOG
LIVRE DES PIECES
LIBRO DE REFERENCIA DE PIEZAS

ブラザー工業株式会社
BROTHER INDUSTRIES, LTD.

〒467-8562 名古屋市瑞穂区河岸一丁目1番1号

Printed in Japan / Gedruckt in Japan / Imprimé au Japon / Impreso en Japón

117-727
S95727-001
1999.11. H (1)